

THE PIPELINE

News from the Ventura County Public Works Agency

August 2016

Vol. 7 • No. 7

FROM THE *Director's Desk*

Jeff Pratt,
Public Works
Agency Director



Dear Friends,

It has been a busy summer here at VCPWA. All of our departments have been hard at work on hot August projects. In this issue of The Pipeline, Phil Raba reminds us to keep safe on the job with important summer heat safety tips.

Thanks to more funding, work is moving forward on the construction coordination to expand the County jail. Our engineering team has been working steadily on the plans for the new Todd Road Jail Health & Programming Unit, which will provide better mental health care for inmates.

Our two-part series On the Job with O&M, features a typical day at the Moorpark Water and Reclamation Center with Sky Stanley. If you have an opportunity to take the tour, it's fascinating to see the process that keeps our water clean and safe.

The annual VCPWA picnic is almost here! Keep October 8th marked on your calendars to enjoy family fun at Soule Park in Ojai. See you there!

Best,

Jeff Pratt
Director



WORKING IN THE HEAT

Tips to being safe on the job

We've had some record heat days this summer. Phil Raba, VCPWA Safety Manager, reminds workers of important safety practices to keep in mind while working in the heat. "The body normally cools itself by sweating. During hot weather, especially with high humidity, sweating isn't enough," explains Raba. "Body temperature can rise to dangerous levels if you don't drink enough water and rest in the shade."

Use these tips to prevent heat related illness, heat exhaustion, or heat stroke:

- Drink water every 15 minutes, even if you are not thirsty.
- Rest in the shade to cool down.
- Wear a hat, light-colored clothing, and sunscreen SPF 25 or higher.
- Learn the signs of heat illness and what to do in an emergency.
- Keep an eye on fellow workers.
- "Easy does it" on your first days of work in the heat. You need to get used to it.

Working in full sunlight can increase heat index values by 15 degrees Fahrenheit. Keep this in mind and plan additional precautions for working in these conditions. What to do if a worker becomes ill?

Call a supervisor for help. If a supervisor is not available, call 911. Have someone stay with the worker until help arrives.

TODD ROAD JAIL PROJECTS



Ron Nelson, Commander of the Todd Road Jail, signs the beam for the new Evidence Storage Facility.

The Engineering Services Department provides engineering and contracting support to the many capital and building projects throughout the County. This support is provided to other departments within the Agency as well as outside organizations such as the Sheriff's Department, Health Care Agency, Fire District, Library Services, General Services Agency and Animal Control. Occasionally the Department works with public clients outside of the County, as well.

This summer, the Engineering Services Department has been working on the new 20,000 square foot Evidence Storage facility near the Todd Road Jail and has also begun coordinating efforts on the new Todd Road Jail Health & Programming Unit. ESD is currently in the preliminary stages of development; working with architects, contractors, consultants, and others who are responsible for the new, 62,000 square foot standalone facility. Brian D'Anna, Project Manager, VCPWA Engineering Services Department, gave us the inside scoop on the project.

PROJECT NAME: Todd Road Jail Health & Programming Unit

PROJECT SCOPE: 62,000 square foot standalone facility that will have 64 beds to house inmates in need of medical and mental health services.

REASONING: The 2011 Public Safety Realignment Act shifted custodial responsibility for housing and treating low-level offenders from the State to the Counties, with the belief that local governments are better equipped to offer these critical services in a more efficient manner. This placed greater pressure on the Ventura County Sheriff's Office to address the medical and mental health needs of long-term inmates.

FUNDING: Senate Bill 863 authorized a \$500 million financing program to assist counties in meeting the need to care for these inmates. The funding is accomplished through lease-revenue bonds issued by the State. The Sheriff's Office applied for this financing and received a conditional award of \$55,137,000 from the State to construct this project. There is a minimum 10% cash match requirement, bringing the estimated total project cost is \$61,263,000.

TIMELINE: The Board accepted the State's award of funding on May 10, 2016. We hope to start construction in mid to late 2018 with the hope of moving in before the end of 2020.

ESD INVOLVEMENT: ESD is managing the project for the Sheriff's Office. ESD will hire the architectural consultant and other necessary contractors and will manage the approval process through the Board of State and Community Corrections (BSCC). ESD will work closely with PWA Central Services to coordinate the State's funding process, which is done through regular reimbursement requests to the BSCC. ESD will also manage and oversee construction activities.

On the job with **O&M**

Part 2

In the July issue of The Pipeline, we introduced you to several of the hardworking Operation and Maintenance team members and gave you a glimpse into their daily job duties. In part two of the series, we spend a typical day on the job with Sky Stanley, State certified Grade II Wastewater Operator and a Water Wastewater Service Worker II for PWA Water and Sanitation in Moorpark.



7:00am- My “Day in the life” as a Water Wastewater Worker II starts with a staff meeting.

We operate 3 wastewater treatment plants, 11 lift stations, and 5 collection systems. We work alone most of the time so communication is important, along with safety reminders. The crew consist of 6 Operators and 2 Operators in Training (OIT).

After the meeting we are off to do the jobs listed on our weekly schedule provided by the Lead Operator, Jack Kramer. Job duties are different every day for all operators. Today, I will be running the Belt Press and doing Secondary Checks.

Belt Press Operations Sludge ➔ Belt Press Machine ➔ Sludge with water removed ➔ Dump Truck ➔ Drying Bed ➔ Landfill

1. The Belt Press is a large machine about the size of a small two-story house that dewateres sludge. The sludge is pumped from the bottom of our clarifiers and injected with a polymer to help separate the water from the sludge.
2. The sludge enters the Belt Press, where a series of belts and rollers separate the sludge from the water.
3. The dewatered sludge “biosolids” falls onto a conveyor belt that takes it to a hopper for storage. One of our jobs is to dump the hopper before it is overfull. Don’t be late!! It will be a huge mess if the hopper is not dumped in time.
4. The hopper is emptied into a dump truck which is driven to a drying bed: where biosolids are stored and later hauled to the landfill.
5. A double trailer bottom dump truck is weighed-in empty and weighed-out full to keep track of how many tons of biosolids are hauled.

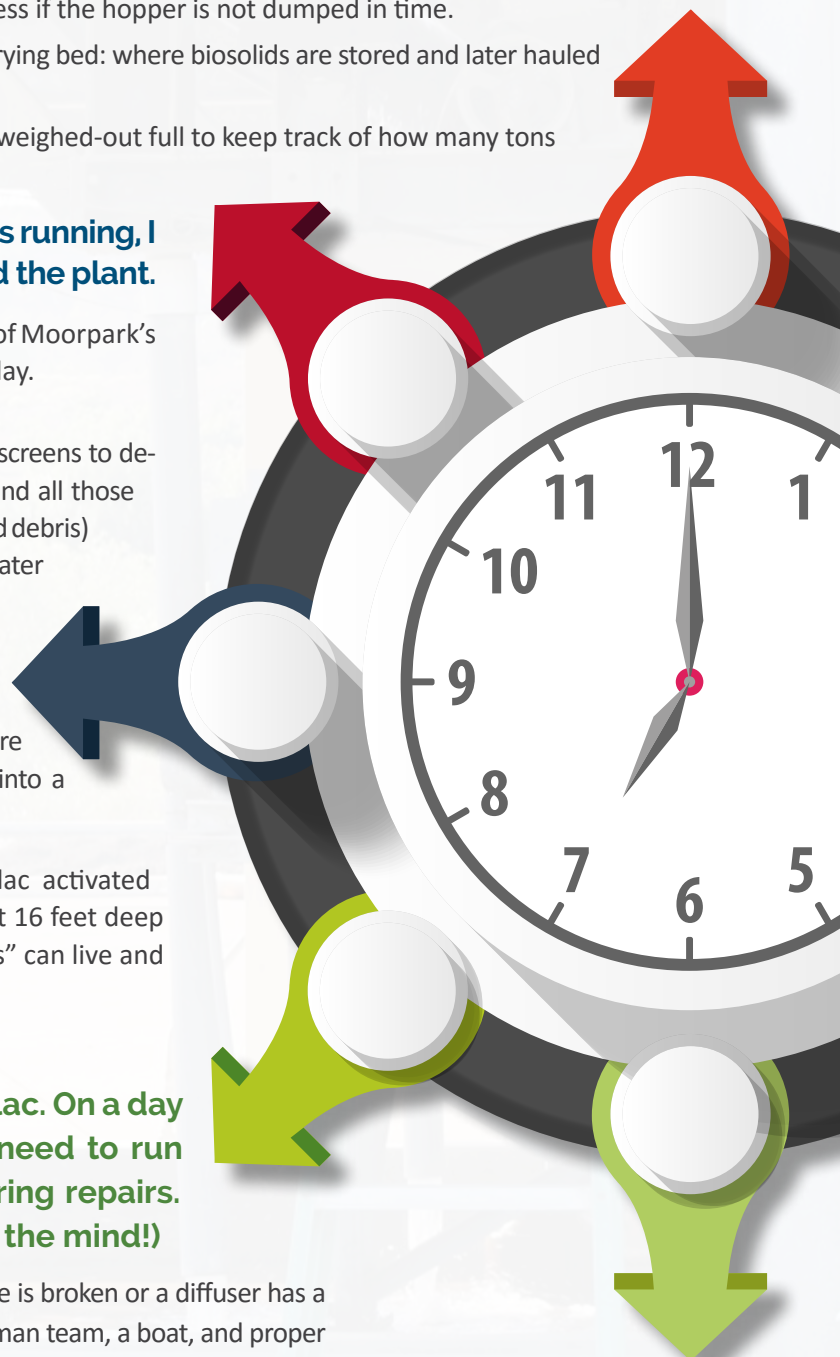
9:00am- Secondary Checks - While the belt press is running, I have a short window to get other things done around the plant.

Location: Moorpark Wastewater Treatment Plant, Headworks. All of Moorpark’s wastewater enters the plant here, just under 2 million gallons a day.

1. Here at headworks, the wastewater flow first goes through bar screens to de-rag the sewage from the collection system. (This is where we find all those missing goldfish.) The “rags” (paper products, plastic materials and debris) fall into a trough and are pushed to the screw press. The wastewater is pushed through the screen and the removed muffin-shaped bundles of rags drop into a dumpster that goes to a landfill.
2. After the flow leaves the bar screens, it enters a grit separator. Here, the heavy grit particles fall to a V-shaped bottom and are pumped up to the classifier. From the classifier, the grit goes into a screw press, like the rags, and falls into a dumpster.
3. From the grit separator, the wastewater flows to the Biolac activated sludge process. The Biolac consists of two large basins about 16 feet deep where air is added to the basins so natural microscopic “bugs” can live and feed on the remaining wastewater particles.

10:30am- On a good day, I continue onto the Biolac. On a day when the headworks is having problems, I may need to run down to the belt press and dump the hopper during repairs. (Always have to keep the belt press in the back of the mind!)

1. At the Biolac, I check all chains, cables, and air diffusers. If a cable is broken or a diffuser has a geyser, they need to be fixed as soon as possible. This takes a 3-man team, a boat, and proper protective equipment for safety.



1:30pm - After inspecting the Biolac, it's time to check the Blower Room.

1. We have 4 compressed air blowers, each about the size of a VW Bug that supply air to the Biolac. Two blowers operate at a time. I check for alarms, air flow, and hour reads, and make adjustments as needed. This room is very loud and requires hearing protection.
2. From the blower room, we go back to following the flow. When the wastewater leaves the Biolac, it goes to the clarifiers. I measure the depth of solids at the bottom by using a "Sludge Judge" a clear tube 15 feet long marked at every foot. Also, I check the torque meter on the motor that pushes the sludge solids on the bottom to make sure the skimmers on top of the clarifier are moving, and make sure floating debris is moving to the scum pit (a holding well). Then I check the pump oil level and make sure the scum level is not above the hanging float.
3. Next is the RAS (Return Activated Sludge) Pit. I check all pumps, water valves, flow meters and check for leaks, alarms, and high levels.
4. Last stop is the MCC (Motor Control Center) where we control most of the secondary pumps and clarifiers by turning an HOA switch (Hand Off Auto) or the electrical breakers. This is also where we Lock Out and Tag Out any equipment being serviced. In the MCC room I check for alarms, tripped breakers, pump hour reads, and pump GPM flows.
5. The HOA can also be controlled through a PLC (Programmable Logic Controllers) that sends data to our SCADA system (Supervisory Control And Data Acquisition) so we can control equipment from the field via laptop or from the office computer.
6. The majority of our treatment plants and lift stations can be controlled by SCADA.

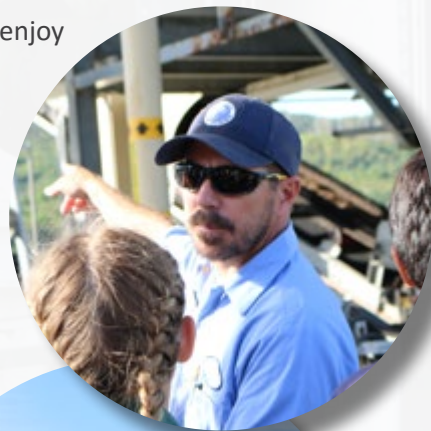
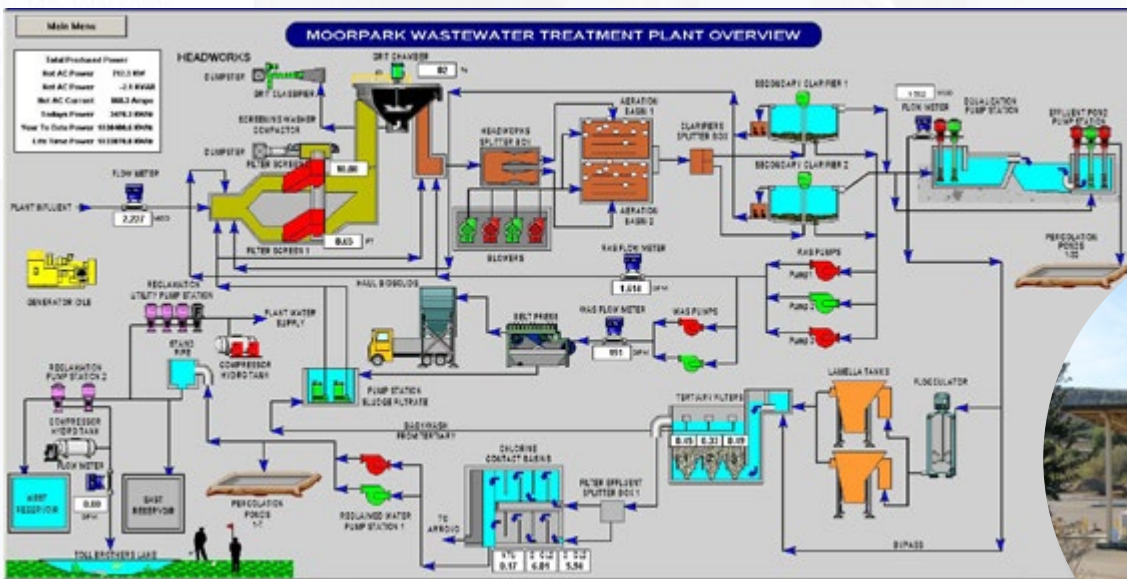
3:00pm- Done for the day? Not just yet...

1. Check in with other operators and check SCADA for alarms
2. Clean up or finish projects like painting, repairs, monitoring, and/or percolation pond and equipment maintenance
3. Shut down and clean belt press
4. Paperwork and reports

5:30pm- Days done...Unless the phone rings.

At any time a pump can go down at any treatment plant, lift station, or a sewer line emergency could occur, so we are always ready 24 hours a day. All six operators rotate on-call for a week each.

This is just a small portion of what we do on a day to day basis. Feel free to contact Sky Stanley or Augustine Godinez to schedule a group tour of one of our wastewater treatment plants. I enjoy giving tours. And no, it is not stinky. Well, maybe a little in one spot.



VCPWA in the Community

VCPWA WPD Deputy Director Karl Novak spoke about our new Raptor Pilot Program at a symposium on alternatives to anticoagulant rodenticide hosted by Ventura County Supervisor Linda Parks and State Senator Fran Pavley at CSUCI. On July 20, Facility managers, the environmental community and homeowner association members were in attendance to see if the raptor program might be an environmentally safe and sustainable option for rodent control.



Did you see us at the Taste of Wellness event? This year's "Eat Well" theme featured 3 of our very own booths, educating people on different wellness topics on July 26. David Goldstein handled the composting Worm Diet booth, Sandy Harrison and Sarah Levin educated people on the value of water, and David Laak informed the community about the County Stormwater Program. A special thanks to everyone who came out and to David, Sandy and David for representing VCPWA!

Come Learn...

HOW TO MAKE YOUR LANDSCAPE WATERSHED FRIENDLY!

Join us Saturday, September 10th at **Meiners Oaks Elementary School in Ojai** or September 24th at **Oak Park High School in Oak Park** from 9 a.m. to 12 p.m. to learn the basics on how to create a beautiful drought resilient landscapes.

Once you've mastered the basics, join us for some hands on fun! Our upcoming series of interactive seminars help you plan and evaluate your garden, design your new landscape, and how to use water resources wisely and thrives – even during a drought!

For more details & registration for seminars visit: www.greengardensgroup.com/events/tags/ventura



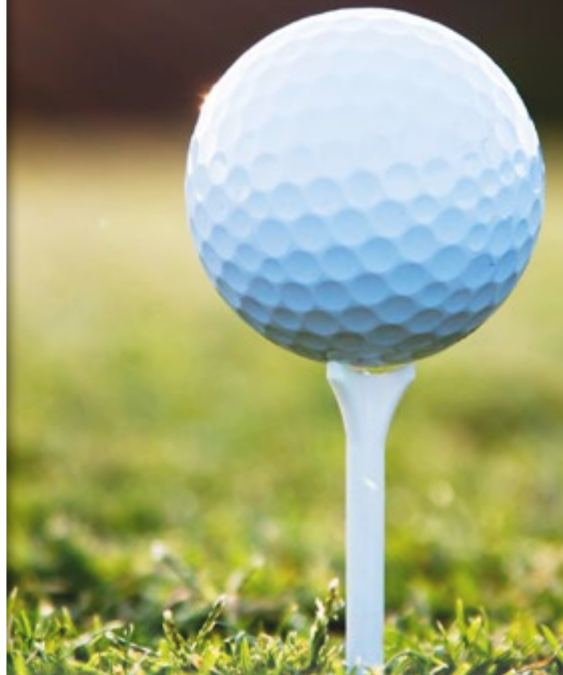
Join Us!

The Annual PWA Golf Tournament

Get your team together for the Annual PWA Golf Tournament! Grab your clubs to tee off for an 18 hole scramble at Soule Park, just before the VCPWA Picnic on October 8th! Green fees are \$60 per player, and each foursome team will compete for special prizes!

Check in will start at 6:30 am and the first tee off is at 7:00 am.

For more information contact Howard Hope at 658-4322 or Karl Novak at 672-2106.



31ST ANNUAL

**Ventura County
Public Works
Picnic**

**COME ONE!
COME ALL!**

OCTOBER 8TH

10:00am - 3:00PM

**THE ONE & ONLY
★ CONEY ISLAND IN THE PARK ★**

ENJOY A FUN FILLED DAY OF:

- **BBQ** • **FACE-PAINTING** • **SILENT AUCTION**
- **CARICATURE DRAWING** • **GAMES/PRIZES**
- **RAFFLES** • **HORSE SHOES** • **GOLF TOURNAMENT**

At Soule Park in Ojai

Tickets will be on sale soon at your Department's Administration desk! Event Sponsored by VCPWA Management.