

Moorpark-WWD1 DROUGHT

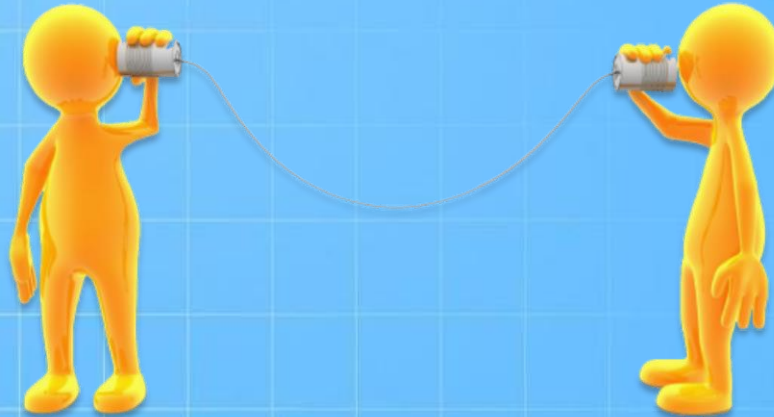
California
411



Presented by
Dave Sasek, Director
County of Ventura
Water & Sanitation Department
July 1, 2015

**OUR WATER
SUPPLIES**

**CALIFORNIA
DROUGHT**



**HOW DID WE
GET HERE?**

**WHAT CAN
WE DO?**

VENTURA COUNTY'S WATER SUPPLIES



Local Stormwater Capture



Groundwater

State Water Project

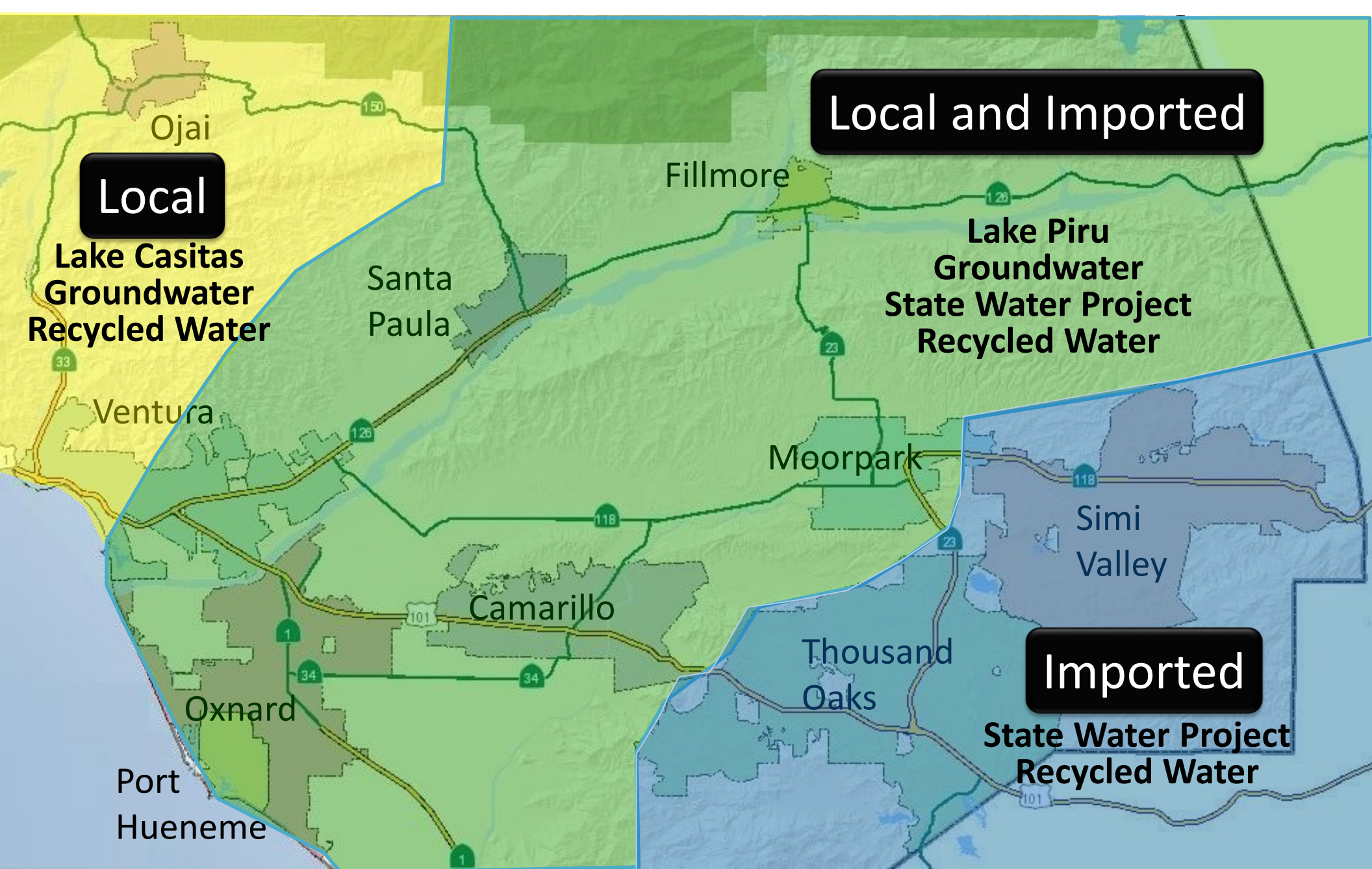


Recycled Wastewater



STATE WATER PROJECT





Local

Lake Casitas
Groundwater
Recycled Water

Local and Imported

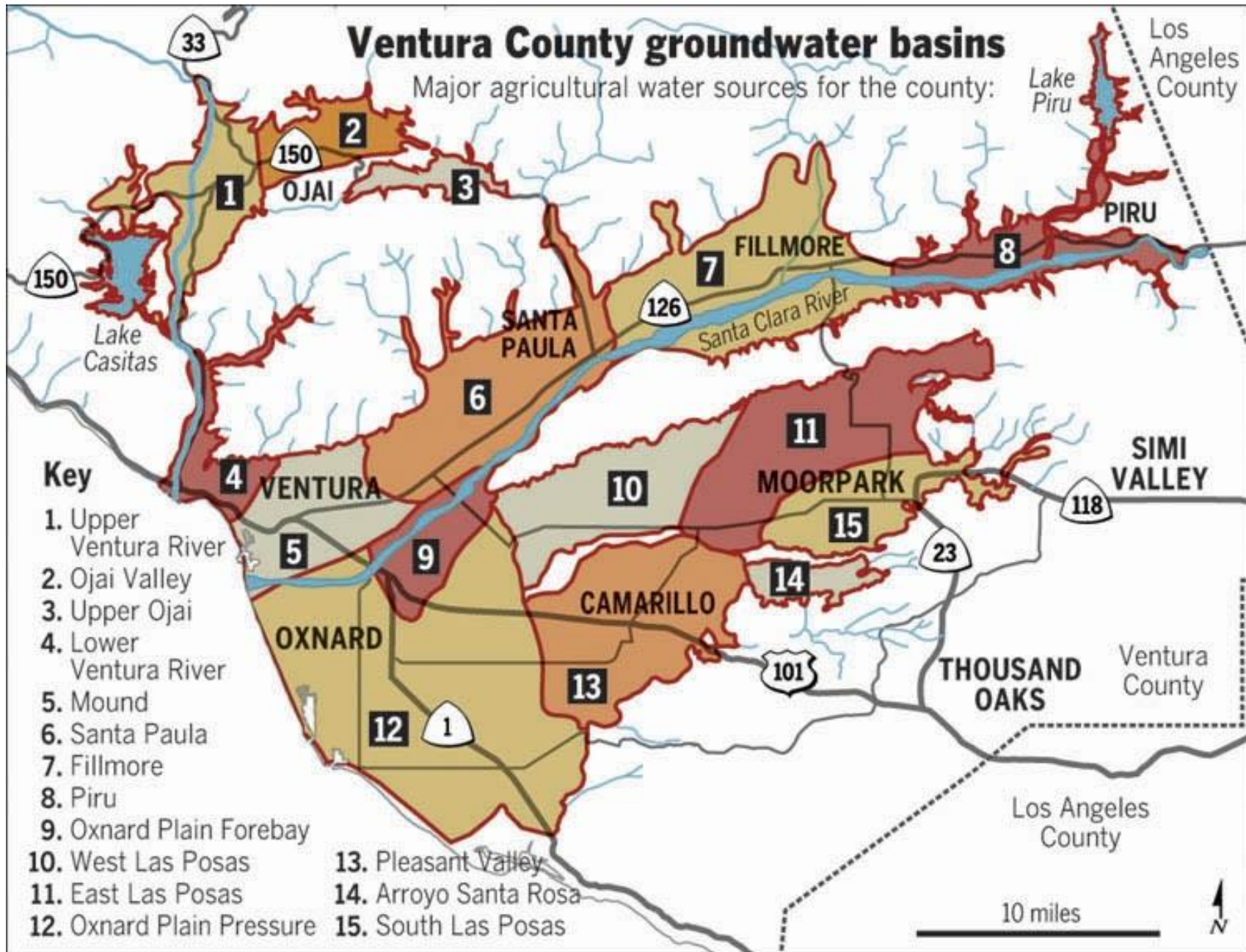
Lake Piru
Groundwater
State Water Project
Recycled Water

Imported

State Water Project
Recycled Water

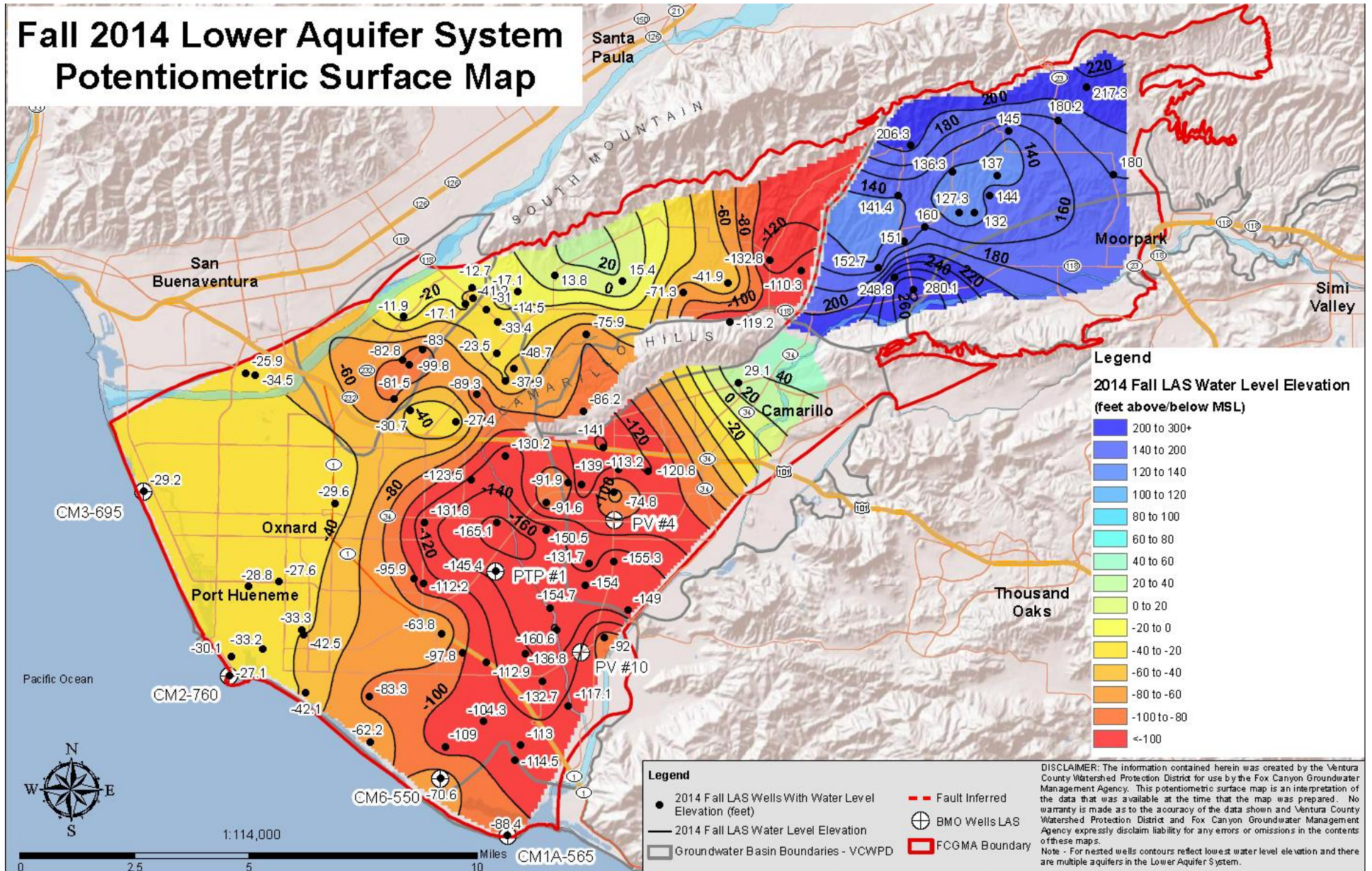
WATER SUPPLY ORIGIN

GROUNDWATER

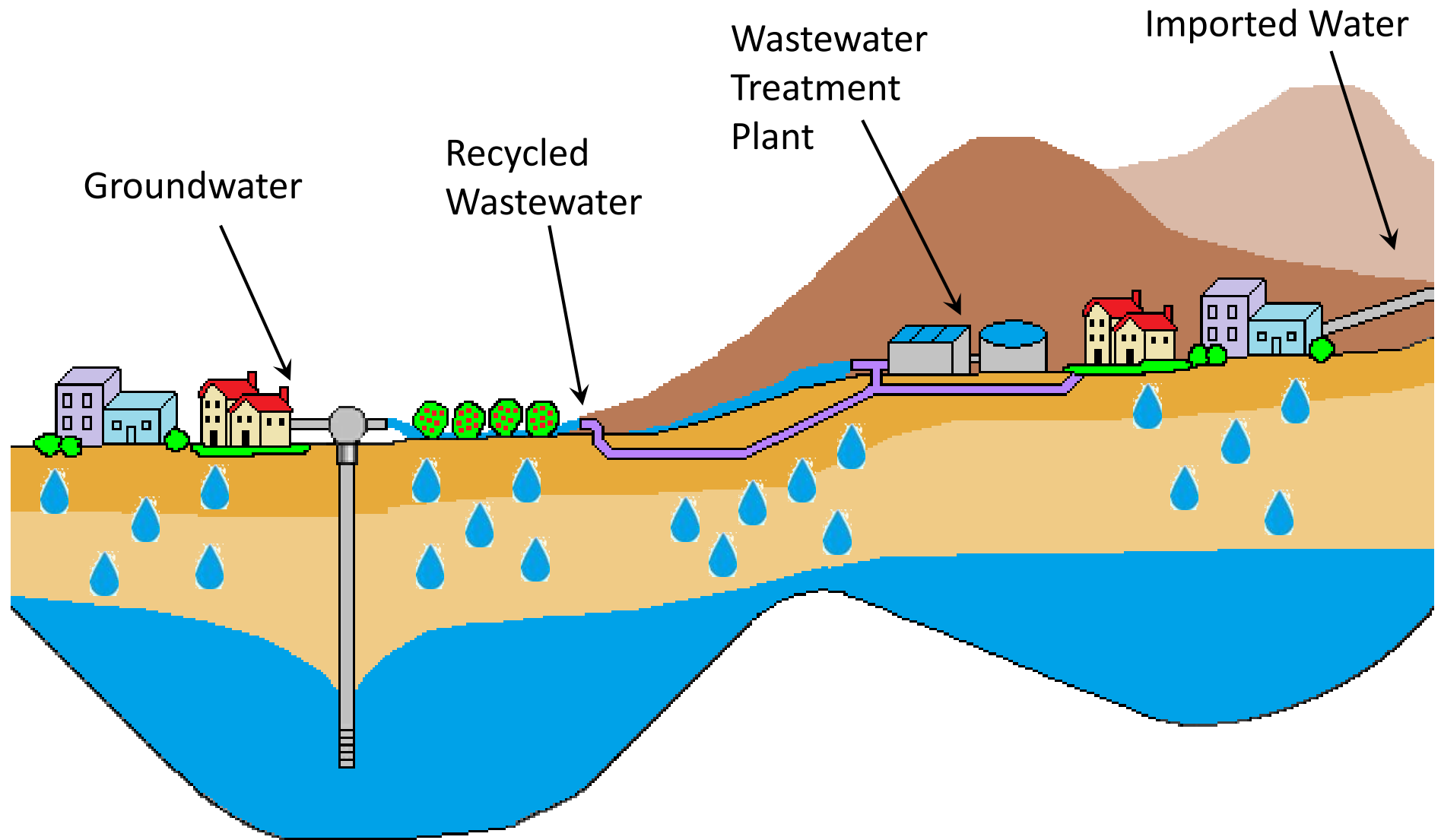


FOX CANYON AQUIFER

Fall 2014 Lower Aquifer System Potentiometric Surface Map



RECYCLED WATER



CALIFORNIA DROUGHT



CALIFORNIA WEATHER RECORD BREAKERS



2013 - driest

2014 - hottest

2015 - lowest snowpack

LAKE OROVILLE 2011



LAKE OROVILLE 2014

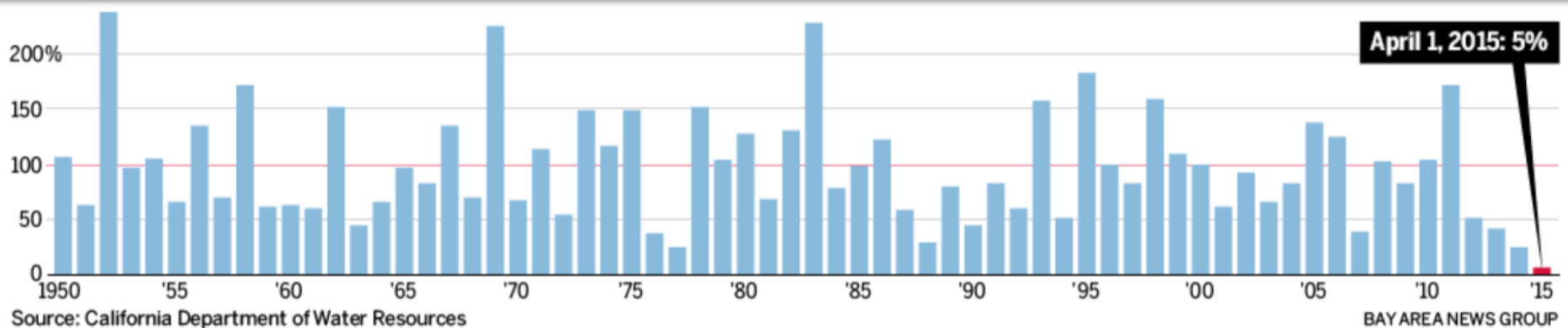


CALIFORNIA WEATHER RECORD BREAKERS

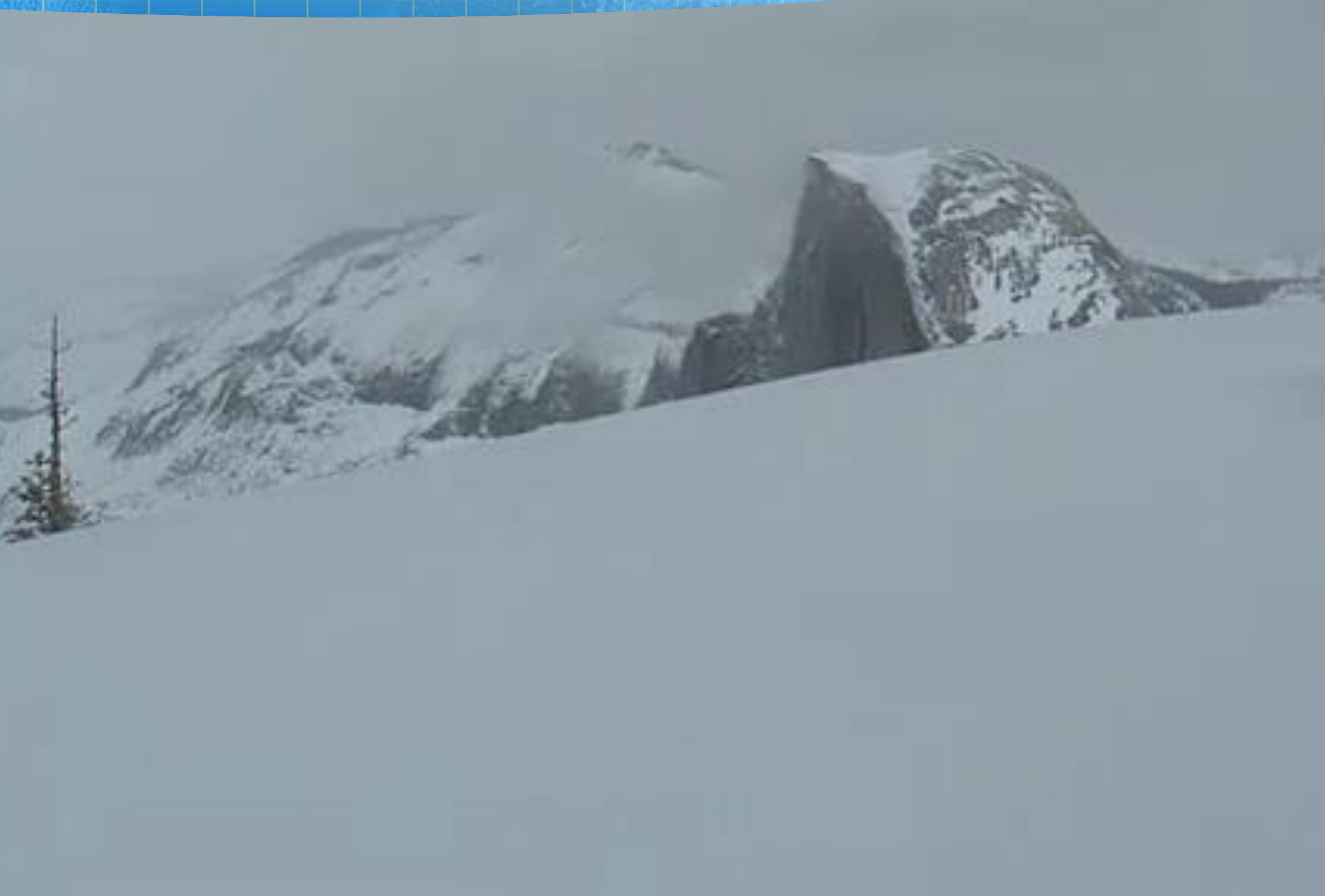
Sierra Snowpack Water Content

“We’re not only setting a new low, we’re completely obliterating the old record.”

–David Rizzardo, chief of snow surveys
California Department of Water Resources



HALF DOME YOSEMITE 2011



HALF DOME YOSEMITE 2012



HALF DOME YOSEMITE 2013



HALF DOME YOSEMITE 2014



HALF DOME YOSEMITE 2015



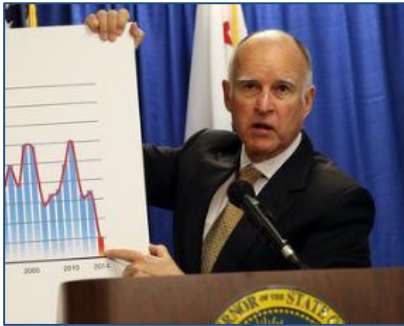
LAKE MEAD APRIL 2015

Reached lowest level since
initial fill in the 1930s



DROUGHT TIMELINE 2014

January – Governor calls for use restrictions & 20% voluntary conservation.



April - Fox Canyon GMA imposes 20% reductions in allowable pumping.



Rest of year - Central Valley farmers fallow land and/or drill deeper wells. Residential wells start to go dry, and water is trucked in for health and safety needs.

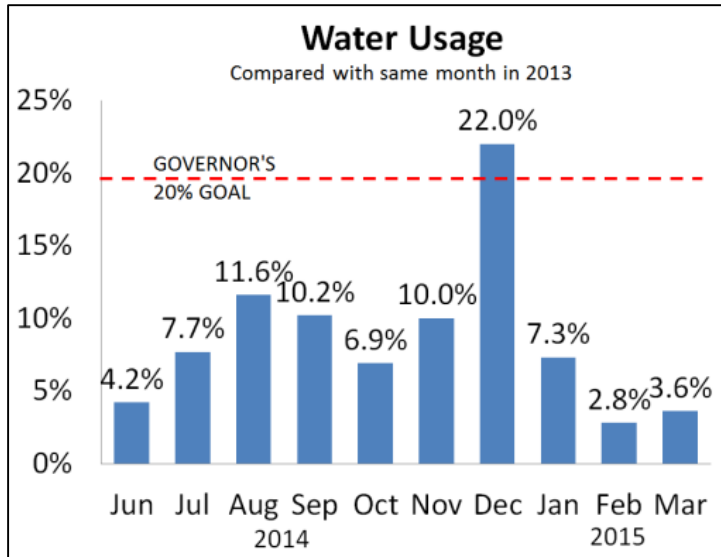
January - After 3 dry winters, & pumping restrictions, SWP & CVP at 0% allocations. SWP later adjusts to 5%.



Rest of year - So Cal draws **half of its storage in lakes & aquifers** and invests in turf removal.



DROUGHT TIMELINE 2015



May 5 – SWRCB adopts requirements for mandatory 25% reduction based on gallons per capita per day water use.

Early in year - State has not met governor's 20% voluntary reduction goal.



April 1 – With lowest snowpack ever, governor issues executive order for mandatory 25% cuts & additional use restrictions.



April 14 – MWD adopts allocations for 15% reduction plus financial penalties up to 3x water rate.

REGULATIONS TIMELINE

May 5, 2015 –

- SWRCB adopted an emergency conservation regulation.
- VC BOS declared a Level 2 water shortage (*restricts pool filling, etc.)

June 11, 2015 –

- The District's Citizens Advisory Committee unanimously recommended an allocation reduction method designed to achieve overall 32% reduction of all water consumption (detailed later in the brief).

May 18, 2015 –

- The provisions of the emergency regulation went into effect. The regulation directs each urban water suppliers to reduce 2015 water production by a set percentage, determined based on 2013 consumption for the period of June through Feb 2013. The District's mandated reduction is 32%.

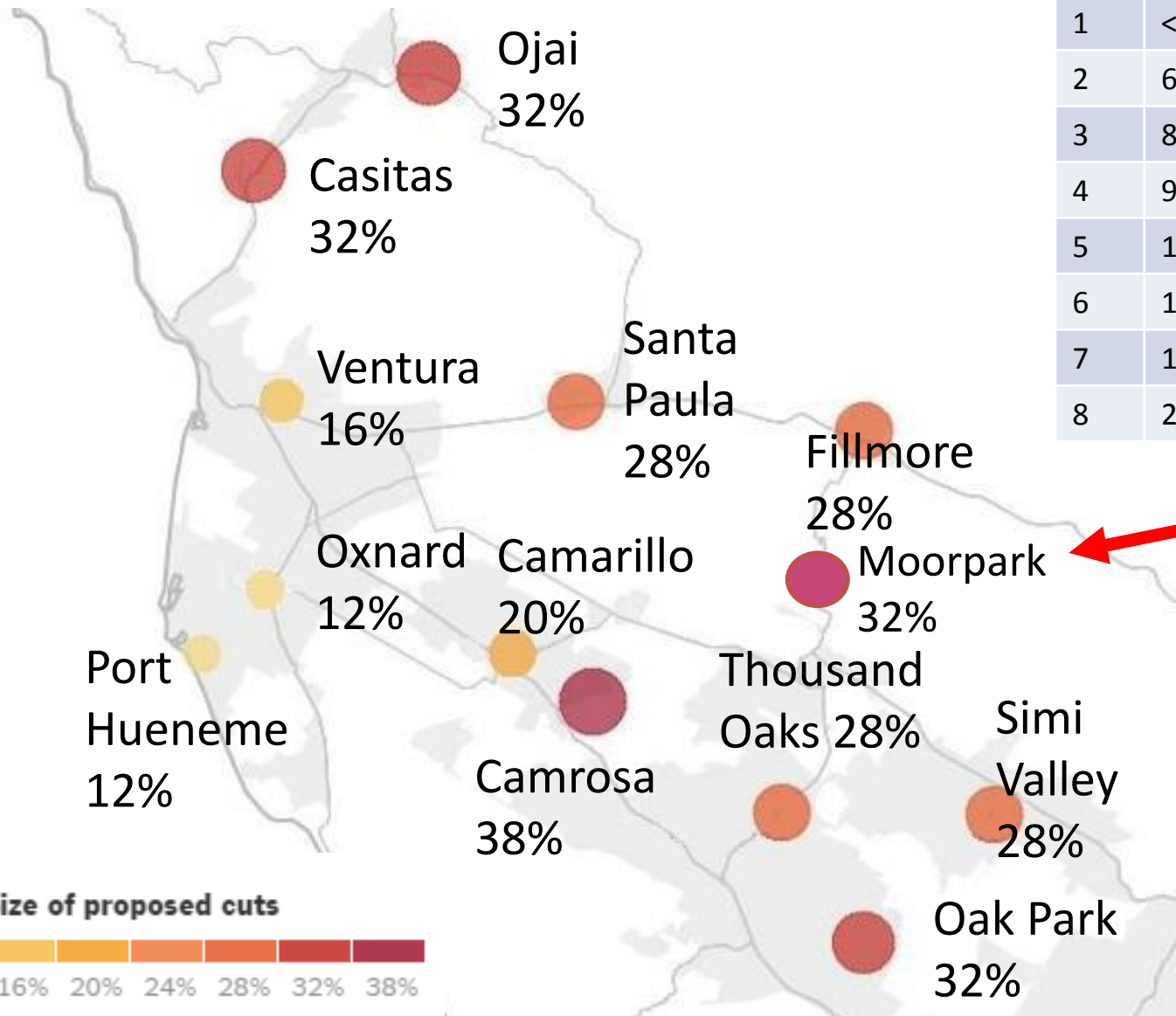
June 22, 2015 –

- The District's Citizens Advisory Committee unanimously recommended a 6% water commodity rate increase, effective January 1, 2016, to enable continued funding of the District's operations and maintenance in view of the reduced revenues caused by drought conservation requirements and due to the increased cost of water from Calleguas and other increases in the cost of providing water service in the District.

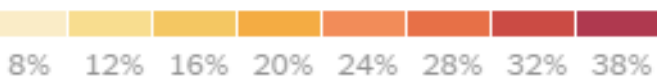


SWRCB MANDATORY CUTBACKS

Tier	GPCD	% Reduction
1	<65	8%
2	65 < x < 80	12%
3	80 < x < 95	16%
4	95 < x < 110	20%
5	110 < x < 130	24%
6	130 < x < 170	28%
7	170 < x < 215	32%
8	215 <	36%



Size of proposed cuts



SWRCB MANDATORY USE RESTRICTIONS

- No washing car without nozzle shutoff
- No washing of sidewalks & driveways
- No irrigating turf on public medians
- No runoff when irrigating
- Fountains must recirculate water
- No irrigation 48 hours after rainfall



SWRCB MANDATORY USE RESTRICTIONS

- New construction must have drip or micro nozzles
- Restaurants must provide water only upon request
- Hotels must provide option of not washing linens



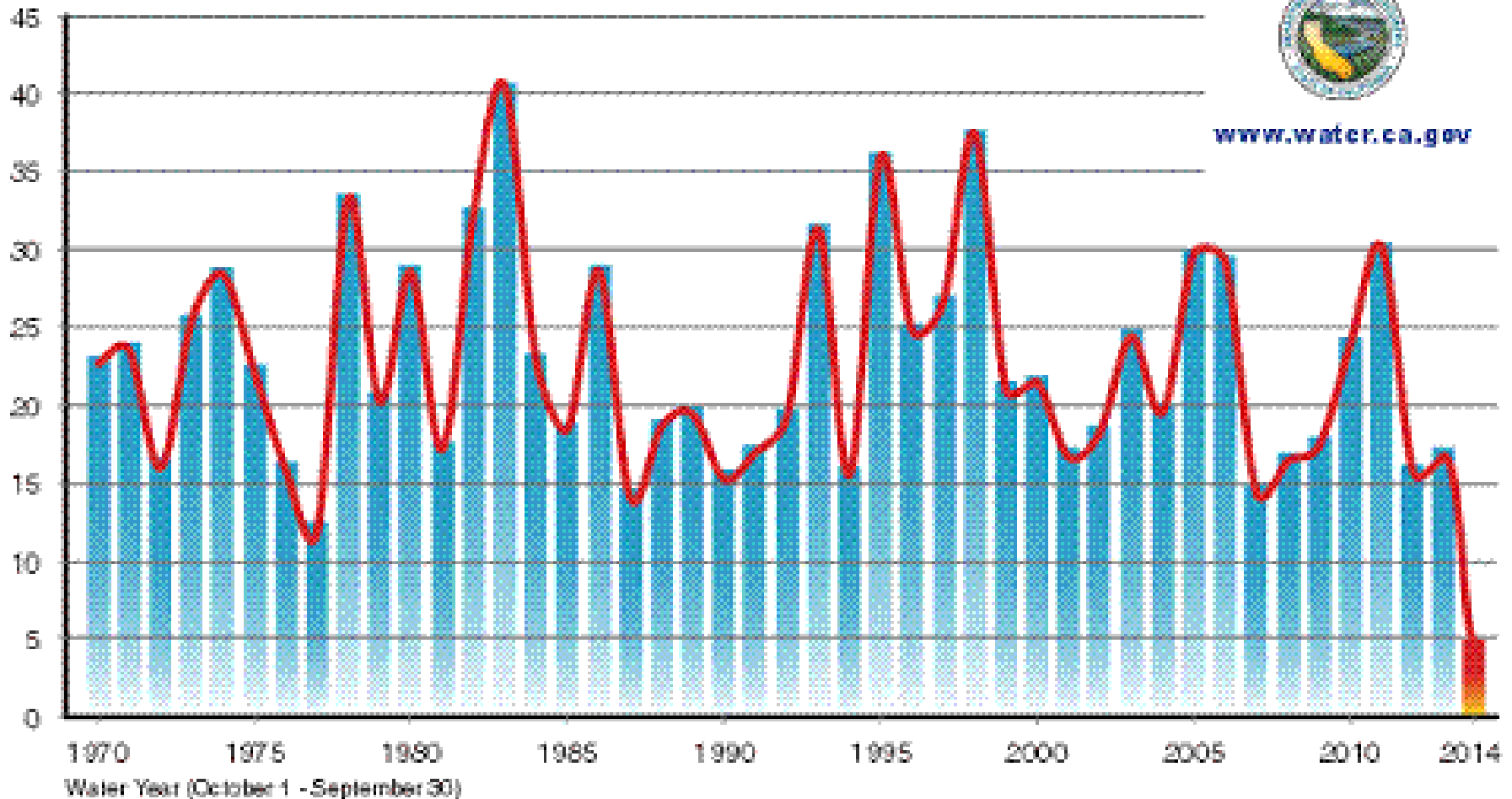


**HOW DID WE
GET HERE**

IT HASN'T RAINED MUCH

Statewide Average Precipitation - by water year

Average Precipitation (Inches)



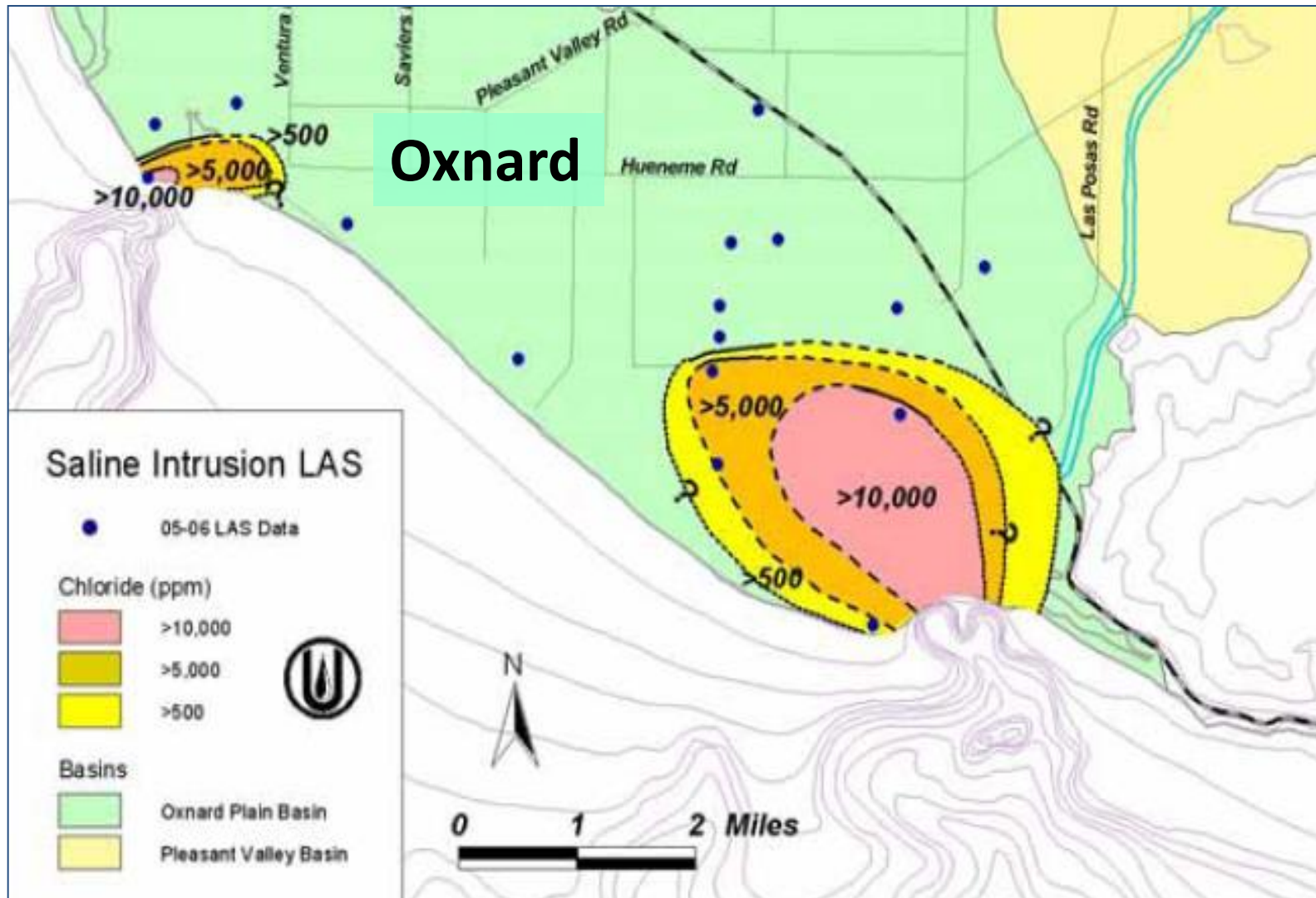
But we have systemic problems which have exacerbated the effects of drought.

DECADES OF DIVERSION FROM WATERWAYS HAVE HARMED THE ENVIRONMENT

An aerial photograph of a river system in a semi-arid landscape. The river flows from the top right towards the bottom left. A large dam with a spillway is visible on the right side of the river. Upstream from the dam, the river meanders through a valley with sparse vegetation. The surrounding land is mostly dry and brownish, with some green patches. The overall scene illustrates the impact of water diversion on the environment.

...so now we must divert less water.

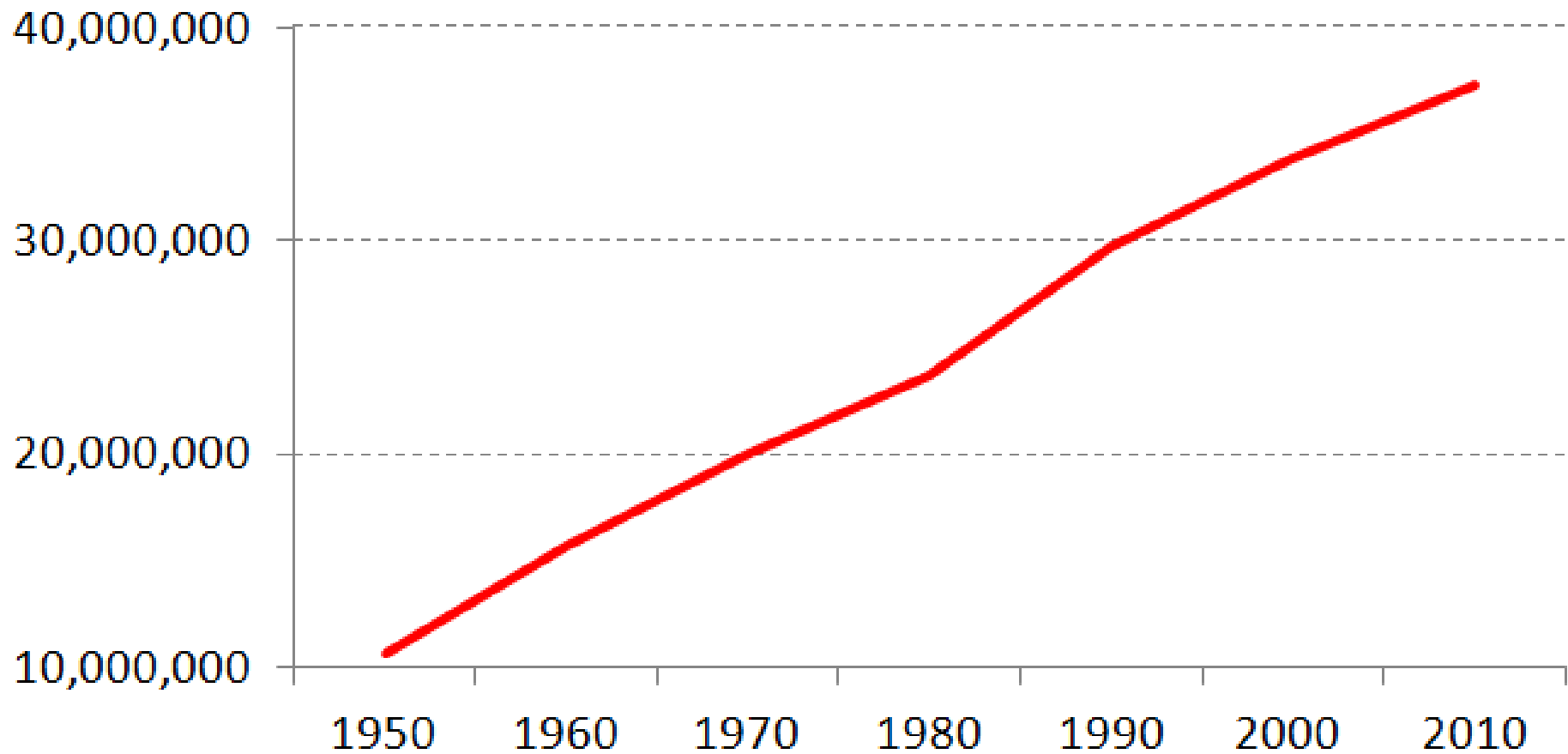
WE HAVE OVERPUMPED OUR AQUIFERS



...so now we must pump less water.

CALIFORNIA'S POPULATION HAS INCREASED

Historical California Population



NEVADA AND ARIZONA POPULATIONS HAVE ALSO INCREASED



Population Growth 2000 to 2010



>5%



>20%

**...so more people
are competing for a
finite water supply.**

WHAT CAN WE DO?



WHAT YOU CAN DO TO REDUCE WATER USE

With emergency drought conditions persisting throughout California, the State Water Resources Control Board adopted Emergency Regulations requiring an **immediate 25% reduction** in overall urban potable water use statewide in accordance with Governor Brown's April 1, 2015, Executive Order. (Reductions vary by Waterworks District.)

The County of Ventura Board of Supervisors adopted a resolution on May 5, 2015, declaring a **Level 2 Water Supply Shortage** for Ventura County Waterworks District Nos. 1 (Moorpark), 17 (Bell Canyon), 19 (Somis), and Lake Sherwood Community Services District (Lake Sherwood).

The following are things you can do immediately to cut your water use:

Indoor Use

- ◆ *Use washing machines and dishwashers only when full.*
- ◆ *Install an aerator on your kitchen faucet to reduce flow.*
- ◆ *Install low-flow shower heads.*
- ◆ *Shorten your time in the shower.*
- ◆ *Turn your bathroom faucet off when brushing your teeth or shaving.*
- ◆ *Use a bucket to catch water when running it to warm up, then reuse this water for outdoor irrigation needs.*

Outdoor Use

- ◆ *Cut your outdoor irrigation in half. Reduce the number of days and the number of minutes per station on your irrigation system. (This one action alone will greatly help us achieve our conservation goal.)*
- ◆ *Adjust your sprinklers to ensure only your yard is being watered, not your house, sidewalk, or street.*
- ◆ *Add a layer of mulch around trees and plants to reduce evaporation and keep the soil cool.*
- ◆ *Use a broom instead of a hose to clean driveways, sidewalks, and patios.*
- ◆ *Keep a cover on your pool/spa to prevent evaporation.*
- ◆ *Don't irrigate during rain or within 48 hours following measurable rainfall.*

WASTE-WATER PROHIBITIONS

DISTRICT RULES AND REGULATIONS

PERMANENT WATER CONSERVATION MEASURES COMMERCIAL, INDUSTRIAL, AND GOVERNMENTAL CUSTOMERS

WATER-WASTE PROHIBITIONS

- Serving water in restaurants and food service establishments unless water is requested by customer
- Outdoor irrigation between 9 a.m. and 4 p.m.
- Using potable water to wash sidewalks and driveways, except if necessary to eliminate dangers to public health and/or safety
- Operation of ornamental fountain unless water is recirculated
- Operation of a commercial conveyor car wash without the use of a recirculating water system or without a waiver from the District
- Installation of a non-recirculating water system in a new commercial conveyor car wash or a new commercial laundry system

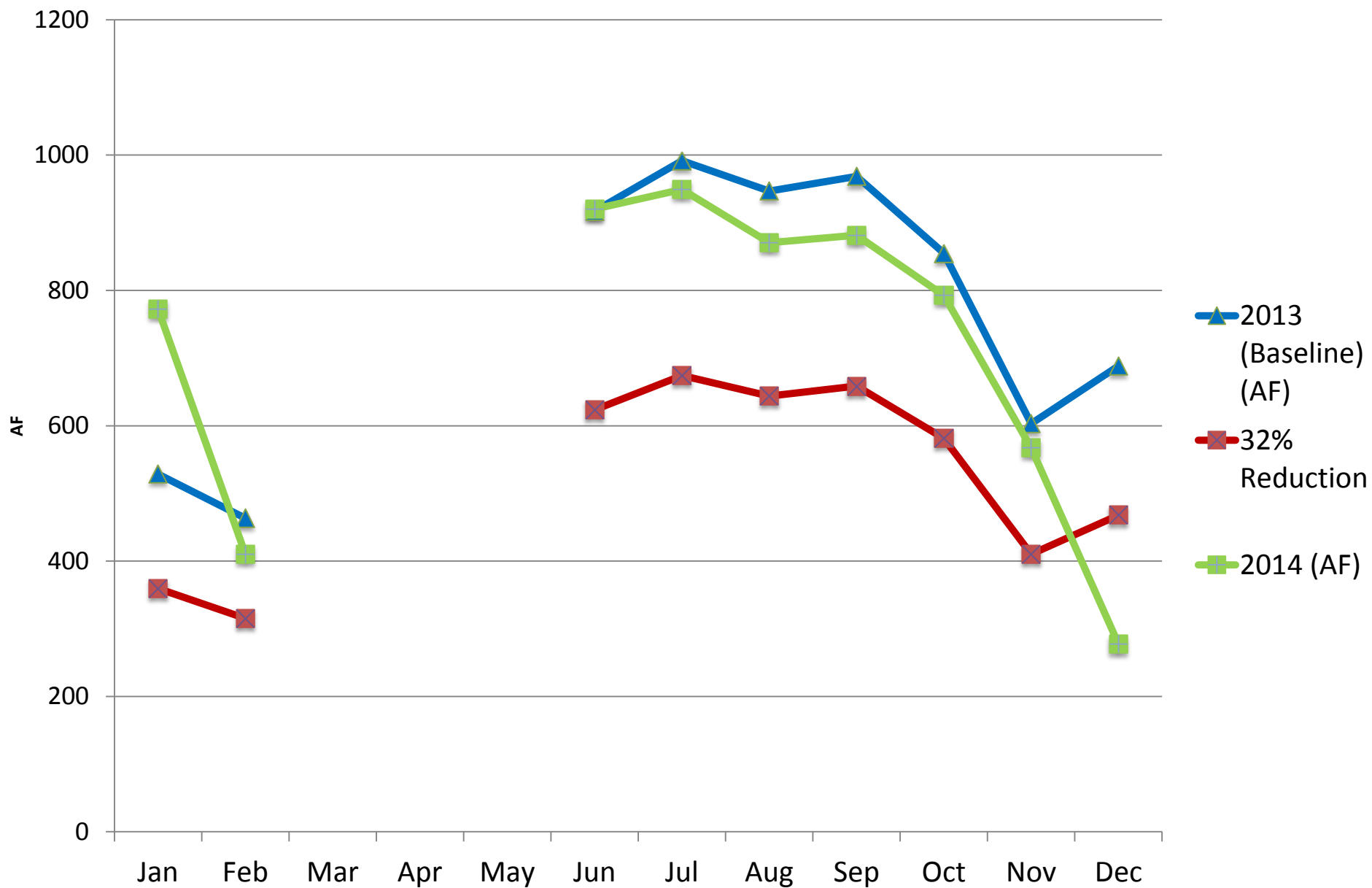
CURRENT BILLING ADJUSTMENT NUMBER (BAN SCHEDULE DURING PEAK DEMAND)

32% reduction impact

BAN	Current Tier I*	Proposed Tier I*	Current Tier II*	Proposed Tier II*	Current Tier III*	Proposed Tier III*	Current Tier IV*	Proposed Tier IV*
1	0-8	0-8.00	9-21	8.01-15.12	22-37	15.13-26.46	>37	>26.46
2	0-12	0-8.00	13-32	8.01-19.85	33-55	19.86-34.73	>55	>34.73
3	0-16	0-10.08	17-42	10.09-26.46	43-74	26.47-46.31	>74	>46.31
4	0-20	0-12.60	21-53	12.61-33.08	54-92	33.09-57.88	>92	>57.88
5	0-24	0-15.12	25-63	15.13-39.69	64-110	39.70-69.46	>110	>69.46
6	0-28	0-17.64	29-74	17.65-46.31	75-129	46.32-81.03	>129	>81.03
7	0-32	0-20.16	33-84	20.17-52.92	85-147	52.93-92.61	>147	>92.61
13	0-56	0-35.28	57-147	35.29-92.61	148-257	92.62-162.07	>257	>162.07
29	0-120	0-75.60	121-315	75.61-198.45	316-551	198.46-347.29	>551	>347.29
59	0-240	0-151.20	241-630	151.21-396.90	631-1103	396.91-694.58	>1103	>694.58
119	0-480	0-302.40	481-1260	302.41-793.80	1261-2205	793.81-1389.15	>2205	>1389.15

*Tiers are in hundred cubic feet (HCF)/month

DISTRICT 1 WATER REDUCTION COMPLIANCE TRACKER



DIST 1 WATER REDUCTION COMPLIANCE TRACKER (EXCLUDING AG)

	<i>2013 (AF) (Baseline)</i>	<i>32% Reduction</i>	<i>2014 (AF)</i>
Jan	528.6	359.4	772.7
Feb	463.5	315.2	410.5
Mar			
Apr			
May			
Jun	917.0	623.6	920.2
Jul	991.6	674.3	949.4
Aug	946.9	643.9	870.7
Sep	968.4	658.5	881.7
Oct	855.0	581.4	792.7
Nov	603.0	410.0	567.3
Dec	688.2	468.0	277.3
Total	6962.2	4734.3	6442.5

CURRENT AND PROPOSED RATES

<i>Tiers</i>	<i>Current</i>	<i>Proposed 6% Increase January 1, 2016</i>
Tier I	\$2.928/HCF \$1,275.44/AF	\$3.104/HCF \$1,352.10/AF
Tier II	\$3.074/HCF \$1,339.03/AF	\$3.259/HCF \$1,419.62/AF
Tier III	\$4.611/HCF \$2,008.55/AF	\$4.889/HCF \$2,129.65/AF
Tier IV	\$7.685/HCF \$3,347.59/AF	\$8.148/HCF \$3,549.27/AF
HCF = Hundred Cubic Feet; AF = Acre Feet		

A hearing will be held on Tuesday, August 11, 2015, at 11:00 a.m. in the Board of Supervisors' Hearing Room in the Hall of Administration at the Ventura County Government Center, 800 South Victoria Avenue, Ventura, concerning the proposed water allocation reductions and rate increase. At the hearing, any person may be heard regarding the recommended reductions in water allocations and rate increase.

CURRENT AND PROPOSED AG RATES

<i>Tiers</i>	<i>Current</i>	<i>Proposed 6% Increase January 1, 2016</i>
Tier I	\$1.696/HCF \$738.78/AF	\$1.798/HCF \$783.21/AF
Tier II	\$2.928/HCF \$1,275.44/AF	\$3.104/HCF \$1,352.10/AF

HCF = Hundred Cubic Feet; AF = Acre Feet

INITIAL CALLEGUAS MWD SUPPLY ALLOCATIONS-SURCHARGE (5/12/2015)

<i>Date</i>	<i>Action</i>
April 15, 2015	<ul style="list-style-type: none">• Metropolitan approved a Water Supply Allocation Plan• Declared a Regional Level 3 Water Shortage• Imposed a 15% reduction in wholesales water supply• Instituted a surcharge for exceeding the allocation<ul style="list-style-type: none">• \$1,480/AF (up to 15%)• \$2,960/AF (in excess of 15%)
April 15, 2015	Calleguas Board voted to pass surcharges on to retail water purveyors
June 11, 2015	WWD 1 Citizens' Advisory Committee unanimously voted to support proposal to pass-through surcharges on to individual high water users

INITIAL CALLEGUAS MWD SUPPLY ALLOCATIONS-SURCHARGE (5/12/2015)

Allocation Impacts

Total Available Water Supply

Allocation Year Planned Local Supply	1,755	
CMWD Allocation	8,506	
Total Available Water Supply		10,261

Wholesale Shortage

Allocation Year Imported Water Demand	10,139	
CMWD Allocation	8,506	
Percentage reduction in wholesale delivery		16.1%

Retail Shortage

Allocation Year Retail Water Demand	11,894	
Total Water Supply	10,261	
Percentage reduction in retail delivery		13.7%

Applicable MWD surcharge:

If 10% over CMWD Allocation	\$1,258,833
If no reduction from Allocation Year Retail Water Demand	\$2,945,420

SURCHARGE CALCULATION METHOD

Calleguas Allocation:	708.833 AF/mo	(8,506 AF/yr)
GMA Allocation:	<u>146.343 AF/mo</u>	(1,756.118 AF/yr)
Total Allocation:	855.176 AF/mo	(10,262.118 AF/yr)

Total Water Allocated to Customers

	Low Demand (HCF)	Peak Demand (HCF)	
Misc. acct types	279.082	279.082	
Tier I	239.01	239.01	
Tier II	110.75	285.62	
Tier III	226.334	51.464	
	(86.28% x Tier III)	(13.1% x Tier III)	→ Penalty
Tier IV	all	all	
Total	855.176	855.176	

SURCHARGE PROCESS (AG)

- AG excluded from Statewide allocation reductions
- Calleguas wholesale reduction includes AG
- District needs to cover possible excessive AG use that would result in District receiving surcharge from Calleguas
- Proposed method:
 - Use 5 year historical average by AG (2009-2013)
 - Usage in excess of 86.3% of this average would be subject to surcharge (\$3.398/HCF)
 - Usage exceeding this number by more than 15% would be subject to increased surcharge (\$6.795/HCF)
- AG customers have received letters with their 5 year historical average

CALIFORNIA LEGISLATIVE INFORMATION

AB-2100

- Prohibits an association from imposing fines or assessment against a member of a separate interest for reducing or eliminating watering of vegetation or lawns during any period for which the Gov. has declared a state of emergency, or a local government has declared a local emergency, due to drought.

AB-2104

- Provides that a provision of the governing documents or of the architectural or landscaping guidelines or policies shall be void and unenforceable if it contains conditions that have the effect of prohibiting, low water-using plants as a replacement of existing turf.

AB-349

(Proposed)

- Further narrows the ability of an HOA to restrict “low water-using plants,” an area where associations are already very limited. It would void any provision of the governing documents of HOA guidelines that prohibit the use of low water-using landscapes that require “not more than a specified amount of water”, including artificial turf.

SB-992

- Prohibits an association from imposing fines or assessment on separate interest owners for yard maintenance issues related to under-watered plants and reducing or eliminating watering of vegetation or lawns during any period for which the Gov. declared a state of emergency due to drought.



REBATE INFORMATION

Visit **bewaterwise.com**[®]
For Water Efficiency Upgrade
REBATES



Residential WaterSmart Program

Indoor Fixtures	Rebate
High-Efficiency Toilets (Tank-Type)	\$125
High-Efficiency Clothes Washers	\$110

Landscaping Equipment	Rebate
Smart Irrigation Controllers	\$105/Controller for less than one acre \$35/Station for areas larger than one acre
Soil Moisture Sensor Systems	\$80/Controller for less than one acre \$35/Station for areas larger than one acre
Rain Barrels	\$75
Rotating Nozzles for Pop-up Spray Heads	\$4/Nozzle (minimum of 15)

Turf Removal	Rebate
Removal of Irrigated Turf (\$6,000 cap per property / multiple rebates allowed)	\$2/square foot of irrigated turf removed and replaced with drought-tolerant plants or other approved landscape options

Commercial WaterSmart Program

Plumbing Fixtures	Rebate
High-Efficiency Toilets (Multi-Family)	\$145/Toilet - 1.06 gallons per flush or less \$100/Toilet - 1.28 gallons per flush or less
High-Efficiency Toilets (Flushometer/Tank)	\$100
Ultra-Low and Zero-Water Urinals	\$200
Plumbing Flow Control Valves	\$5/Valve (minimum of 10)

Landscaping Equipment	Rebate
Smart Irrigation Controllers/ Central Computer Irrigation Controllers	\$35/Station
Soil Moisture Sensor Systems	\$35/Irrigation controller station
Rotating Nozzles for Pop-up Spray Heads	\$4/Nozzle (minimum of 15)
Large Rotary Nozzles	\$13/Set (minimum of 8 sets)
In-Stem Flow Regulators	\$1/Regulator (minimum of 25)

Turf Removal	Rebate
Removal of Irrigated Turf (\$25,000 annual cap per property)	\$1/square foot of irrigated turf removed and replaced with drought-tolerant plants or other approved landscape options

Food Equipment	Rebate
Connectionless Food Steamers	\$485/Compartment
Air-Cooled Ice Machines	\$1,000

HVAC Equipment	Rebate
Cooling Tower Conductivity Controllers	\$625
Cooling Tower pH Controllers	\$1,750

Medical and Dental Equipment	Rebate
Laminar Flow Restrictors	\$10/Restrictor (minimum of 10)
Dry Vacuum Pumps	\$125/0.5HP (up to 2HP max)



For more information, visit:
bewaterwise.com

**** Rebates are subject to change. Visit bewaterwise.com for current rebate amounts and program details. ****

Lose the Lawn
Save water... Save money!

Reserve your rebate at
bewaterwise.com[®]



New front yard of W&S Dept. Management Assistant who participated in Turf Removal Program.

TURF REMOVAL PROGRAM

After May 12, 2015

RESIDENTIAL

\$2/sf
Max: \$6k

PUBLIC AGENCY

\$2/sq ft (<3k sf)
\$1/sq ft (>3k sf)
Max: \$50k

COMMERCIAL

\$1/sq ft
Max: \$25k

SLOW YOUR H₂O CAMPAIGN

OUR DISTRICTS

WATER WISE TIPS AND REGULATIONS

FACTS

REPORT WATER WASTE

FROM THE COUNTY OF VENTURA WATER AND SANITATION DEPARTMENT **NOTICE OF LEVEL 2 WATER SUPPLY SHORTAGE**

VENTURA COUNTY WATERWORKS DISTRICTS

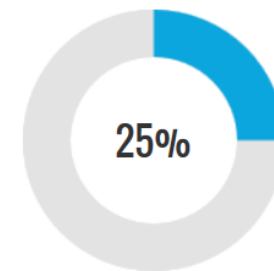
NOS. 1 (Moorpark), 17 (Bell Canyon), 19 (Somis) and 38 (Lake Sherwood)

On May 1, 2015, the Ventura County Board of Supervisors declared a Level 2 Water Supply Shortage. Please review mandatory conservation information regarding your Waterworks District.

With emergency drought conditions persisting throughout California, the State Water Resources Control Board adopted Emergency Regulations requiring an **IMMEDIATE 25% REDUCTION** in overall urban potable water use statewide in accordance with Governor Edmund G. Brown's April 1, 2015, Executive Order. *Reductions vary by Waterworks District.*

Please be aware outdoor irrigation is NOT permitted during and 48 hours following measurable rainfall.

[LEARN MORE](#)



**STATE MANDATE REDUCTION
IN OVERALL WATER USE**

SLOW YOUR H₂O CAMPAIGN

SlowYourH2O.org

HOME

DISTRICTS

TIPS

CONTACT

MOORPARK

BELL CANYON

SOMIS

LAKE SHERWOOD



MOORPARK CALIFORNIA

To our Moorpark customers, in order to meet State mandates and to avoid potential surcharges from the Calleguas Municipal Water District (the District's water wholesaler) we are required to reduce overall water use by 32% in accordance with Governor Edmund G. Brown's April 1, 2015, Executive Order. *Keep up with the District's water saving progress and water source levels below:*

CLICK HERE

TO REVIEW THE COMPLETE SET OF RULES AND REGULATIONS FOR WATERWORKS DISTRICT NO. 1 - MOORPARK

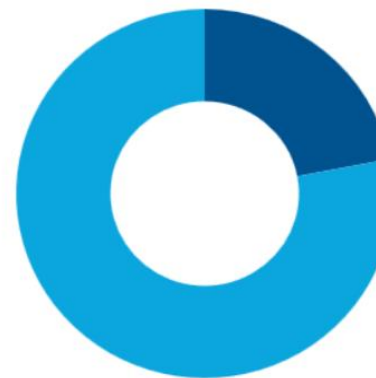
CLICK HERE

TO REVIEW THE NOTICE OF PROPOSED WATER ALLOCATION REDUCTIONS AND RATE INCREASE FOR MOORPARK

HELP US SLOW OUR H₂O BY 32%



PROGRESS 25%



LOCAL WATER SUPPLY
IMPORTED WATER SUPPLY

Read the Water Quality Report for
Waterworks District No. 1 (Moorpark)

CLICK HERE

SLOW YOUR H₂O CAMPAIGN

SlowYourH₂O.org

HOME

DISTRICTS

TIPS

CONTACT

SlowYourH₂O.org

REPORT WATER WASTE

Please use the form below to report water conservation incidents or issues.

Date of Incident:

Time of Incident:

Location

Nature of Incident

Comments

Your Name

Phone

E-mail

Submit

WATER AND SANITATION DEPARTMENT

For questions regarding these Rules and Regulations, please call or visit our office.

Phone: (805) 378-3000

Address: 6767 Spring Rd. Moorpark, CA 93021



DISTRICT 1 CONSERVATION EFFORTS

Currently

- Through Proposition 84 Ventura County Regional Urban Landscape Efficiency (VC-RULE) grant funding, select businesses and residents have been provided with a water audits and nozzle installations at no cost
- In partnership with the Calleguas Municipal Water District (CMWD), City of Moorpark, and UC Master Gardeners, offered water conservation workshops
- Notified customers regarding drought situation and water use efficiency
- Notified agricultural customers regarding water allocation reductions
- Students in Moorpark Unified School District participated in the Metropolitan Water District's Annual "Water is Life" Poster Contest
- Scheduled meeting with Moorpark Homeowners Association
- Promoting rebate programs (turf, washers, toilets, etc.)
- Increasing communication with customers through e-mail and social media

Upcoming

- Slow Your H₂O campaign to include website, signage, posters in prominent locations, up-to-date graphs on drought status, conservation tips and water waste reporting
[www.SlowYourH₂O.org](http://www.SlowYourH2O.org)

 **STAY TUNED...**

“Slow Your H₂O” campaign

<http://www.slowyourh2o.org/>

VCWWD’s microsite-coming soon

 <https://www.facebook.com/VCPWA>

 <https://twitter.com/vcppublicworks>

FOR MORE INFORMATION



**Call the County of Ventura
Water and Sanitation Department
at 805-378-3000**

or visit our website at

<http://pwa.ventura.org/water-sanitation-department/water-and-sanitation-services>



<https://www.facebook.com/VCPWA>