

BELL CANYON DROUGHT

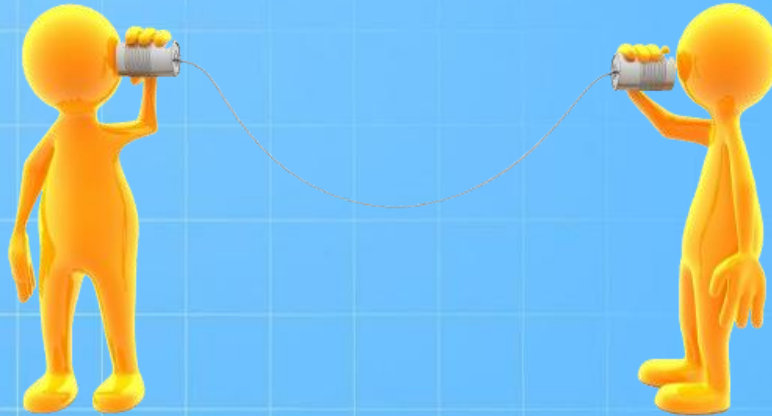


**Presented by
Dave Sasek, Director
Water & Sanitation Department**



**OUR WATER
SUPPLIES**

**CALIFORNIA
DROUGHT**



**HOW DID WE
GET HERE?**

**WHAT CAN
WE DO?**

VENTURA COUNTY'S WATER SUPPLIES



Local Stormwater
Capture



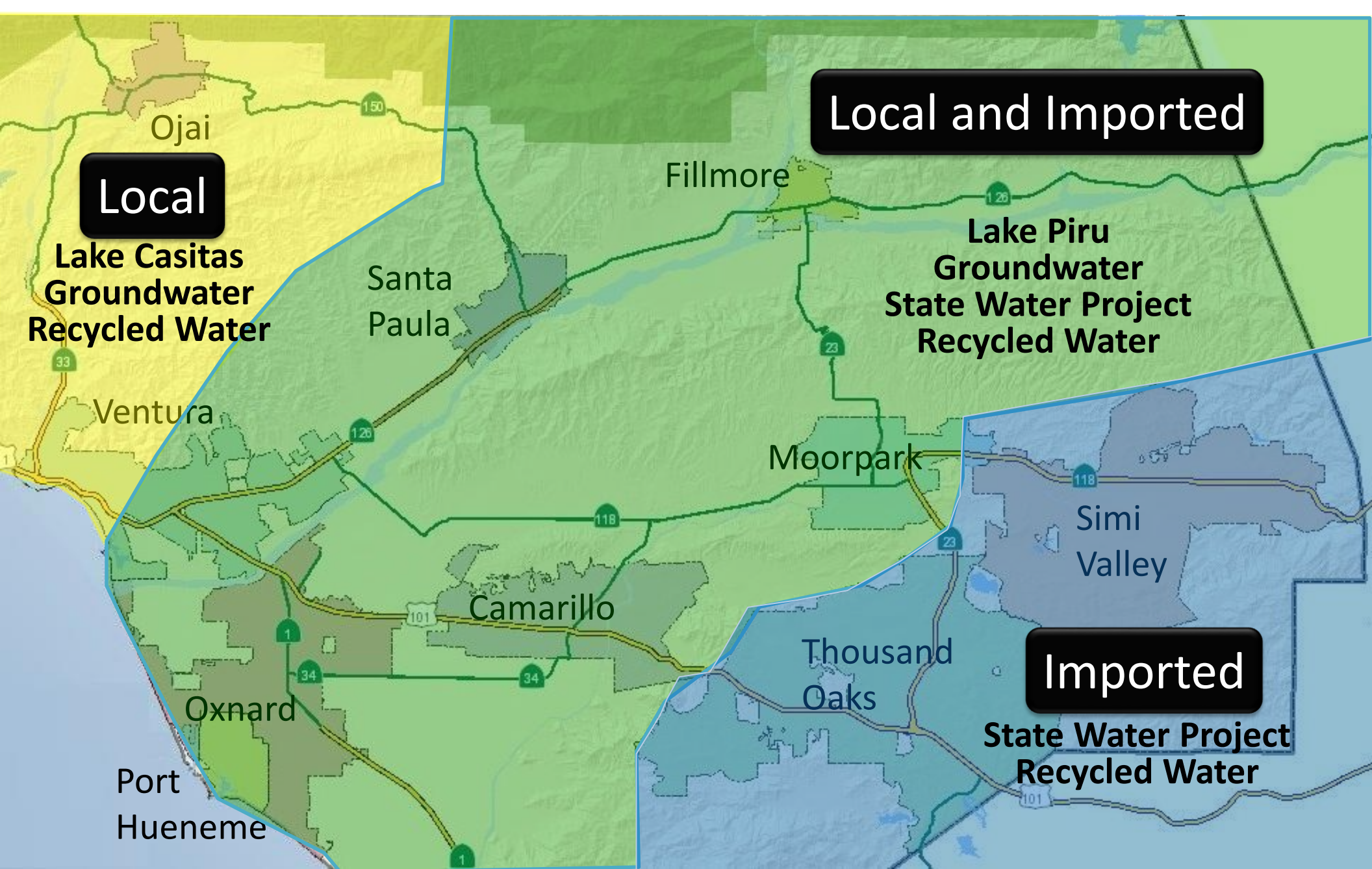
Groundwater



State Water Project

Recycled
Wastewater





WATER SUPPLY ORIGIN

STATE WATER PROJECT



CALIFORNIA DROUGHT

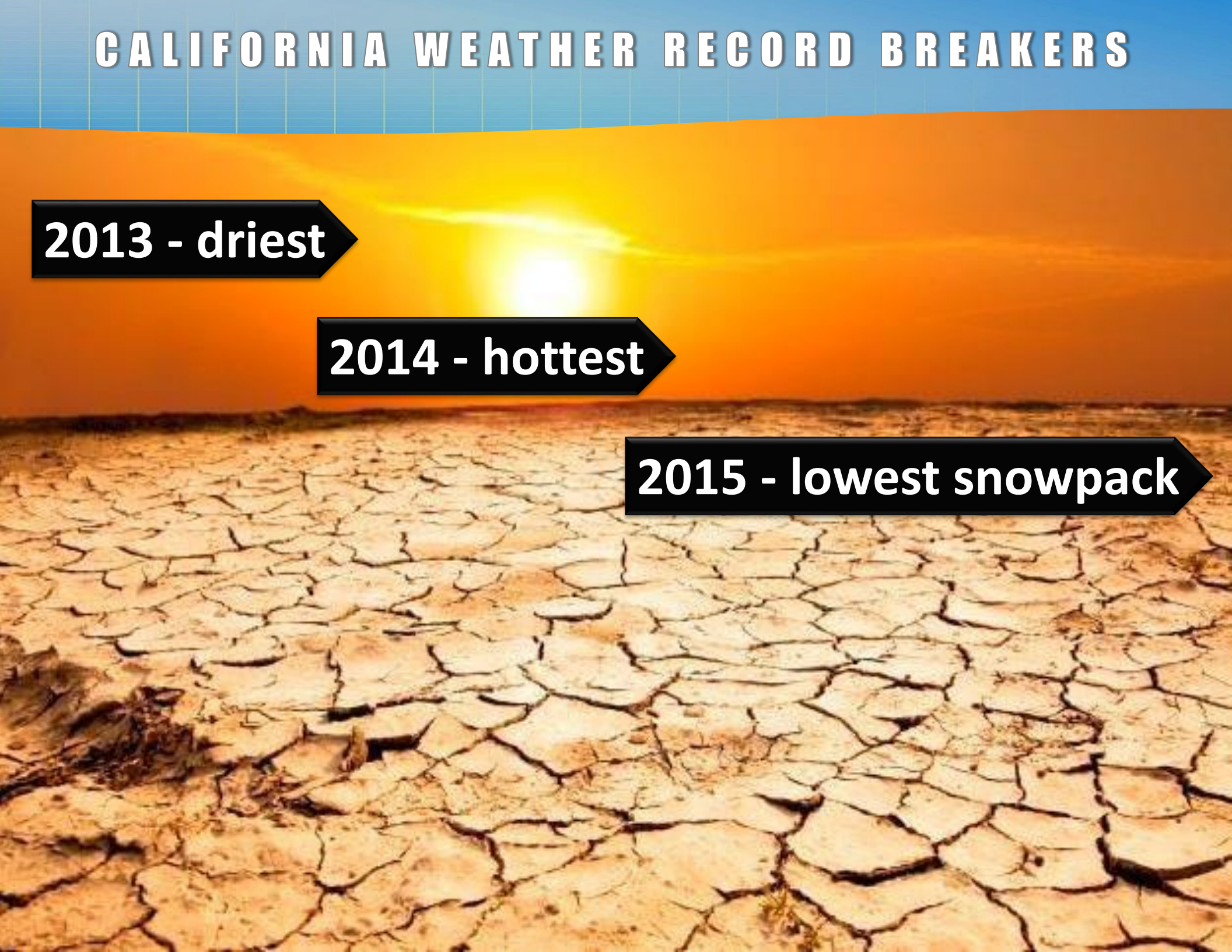


CALIFORNIA WEATHER RECORD BREAKERS

2013 - driest

2014 - hottest

2015 - lowest snowpack



LAKE OROVILLE 2011



LAKE OROVILLE 2014

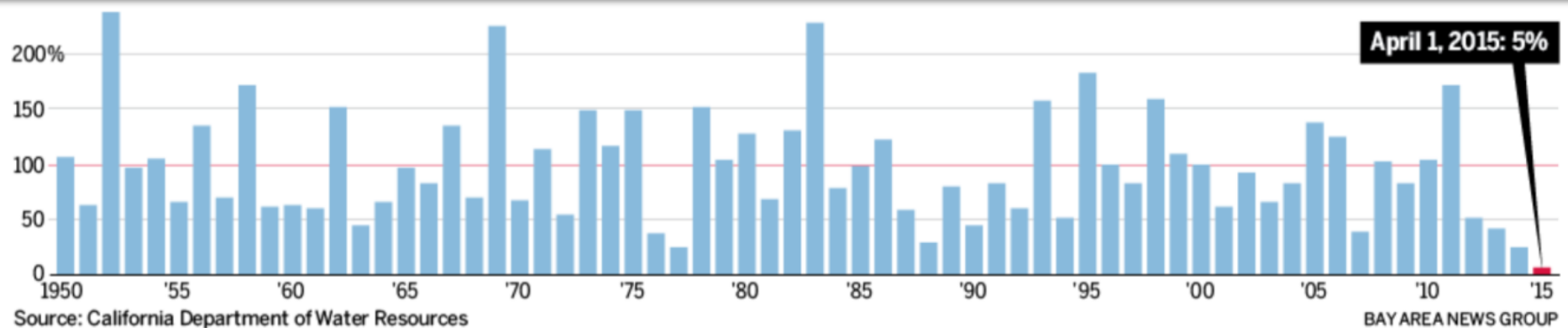


CALIFORNIA WEATHER RECORD BREAKERS

Sierra Snowpack Water Content

“We’re not only setting a new low, we’re completely obliterating the old record.”

–David Rizzardo, chief of snow surveys
California Department of Water Resources



HALF DOME YOSEMITE 2011 - 2015

2011



2012



2013



2014



2015



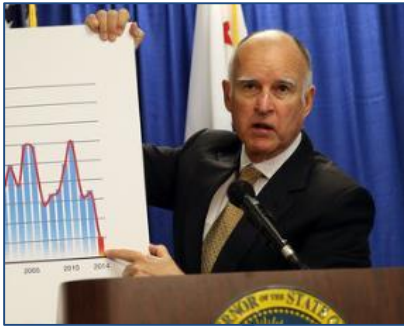
LAKE MEAD APRIL 2015

Reached lowest level since
initial fill in the 1930s



DROUGHT TIMELINE 2014

January – Governor calls for use restrictions & 20% voluntary conservation.



April - Fox Canyon GMA imposes 20% reductions in allowable pumping.



Rest of year - Central Valley farmers fallow land and/or drill deeper wells. Residential wells start to go dry, and water is trucked in for health and safety needs.



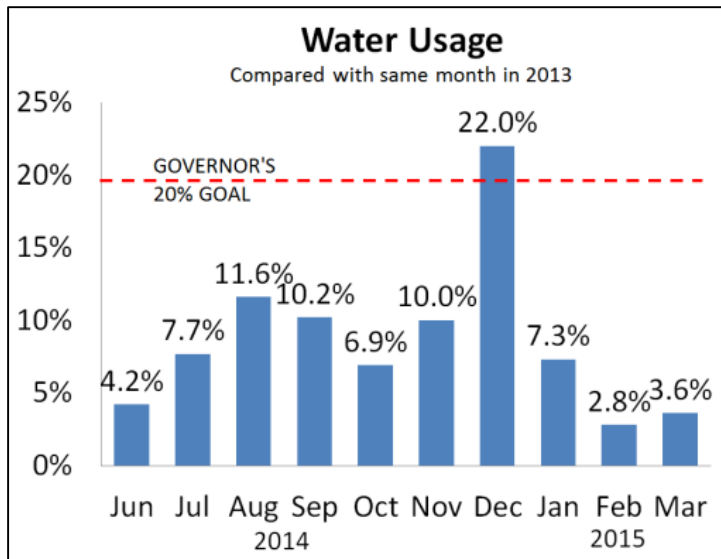
January - After 3 dry winters, & pumping restrictions, SWP & CVP at 0% allocations. SWP later adjusts to 5%.



Rest of year - So Cal draws **half of its storage in lakes & aquifers** and invests in turf removal.



DROUGHT TIMELINE 2015



May 5 – SWRCB adopts requirements for mandatory 25% reduction based on gallons per capita per day water use.

Early in year - State has not met governor's 20% voluntary reduction goal.



April 1 – With lowest snowpack ever, governor issues executive order for mandatory 25% cuts & additional use restrictions.



April 14 – MWD adopts allocations for 15% reduction plus financial penalties up to 3x water rate.

REGULATIONS TIMELINE

May 5, 2015 –

- SWRCB adopted an emergency conservation regulation
- VC BOS declared a Level 2 water shortage (*restricts pool filling, etc.)

May 11, 2015 –

- The District's Citizens Advisory Committee unanimously recommended a 25% reduction of all water allocations in all tiers

May 18, 2015 –

- The provisions of the emergency regulation went into effect. (The regulation directs each distributor of a public water supply that is not an urban water supplier to limit outdoor irrigation of ornamental landscapes or turf with potable water by the persons it serves to no more than 2 days/week and/or reduce by 25% its potable water production relative to the amount produced in 2013.)

June 16, 2015 –

- The District's Citizens Advisory Committee unanimously recommended a 6% water commodity rate increase, effective January 1, 2016, to enable continued funding of the District's operations and maintenance in view of the reduced revenues caused by drought conservation requirements and due to the increased cost of water from Calleguas and other increases in the cost of providing water service in the District.



SWRCB MANDATORY CUTBACKS

Tier	GPCD	% Reduction
1	<65	8%
2	65 < x < 80	12%
3	80 < x < 95	16%
4	95 < x < 110	20%
5	110 < x < 130	24%
6	130 < x < 170	28%
7	170 < x < 215	32%
8	215 <	36%

Smaller water suppliers required to achieve a 25% conservation standard or restrict outdoor irrigation to no more than two days per week.

Port
Hueneme
12%

12%

20%

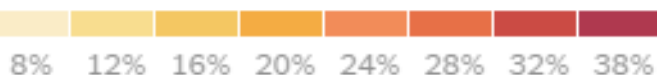
Camrosa
38%

Thousand
Oaks 28%

Simi
Valley
28%

Oak Park
32%

Size of proposed cuts



SWRCB MANDATORY USE RESTRICTIONS

- No washing car without nozzle shutoff
- No washing of sidewalks & driveways
- No irrigating turf on public medians
- No runoff when irrigating
- Fountains must recirculate water
- No irrigation 48 hours after rainfall
- No irrigation of turf on public street medians



SWRCB MANDATORY USE RESTRICTIONS

- New construction must have drip or micro nozzles
- Restaurants must provide water only on request
- Hotels must provide option of not washing linens



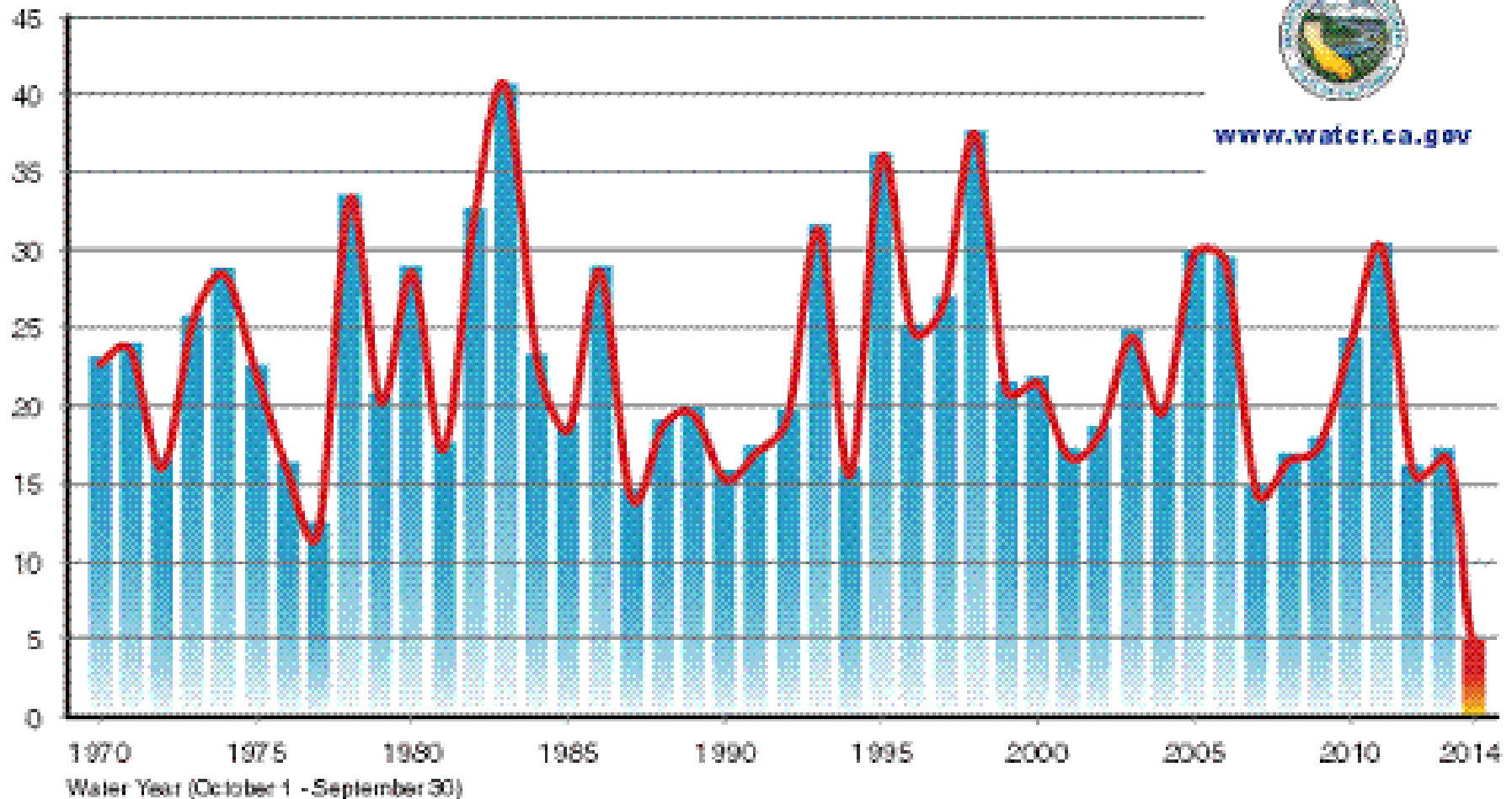


**HOW DID WE
GET HERE**

IT HASN'T RAINED MUCH

Statewide Average Precipitation - by water year

Average Precipitation (inches)



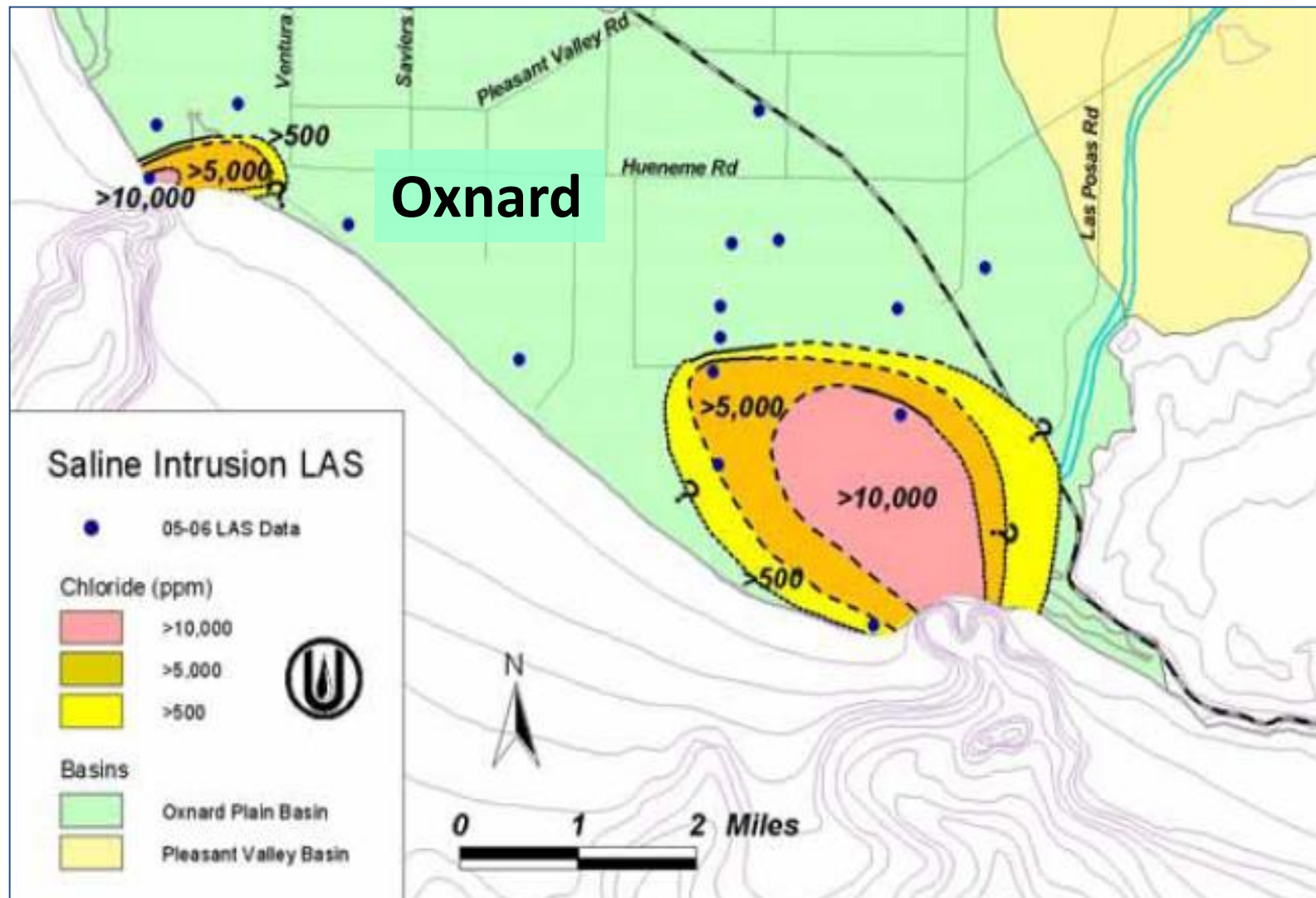
But we have systemic problems which have exacerbated the effects of drought.

DECADES OF DIVERSION FROM WATERWAYS HAVE HARMED THE ENVIRONMENT

An aerial photograph showing a river system in a dry, arid landscape. A large dam is visible on the right side of the river, with water flowing over it. The river winds through the landscape, which is mostly brown and dry, with some green vegetation along the banks. The text "DECADES OF DIVERSION FROM WATERWAYS HAVE HARMED THE ENVIRONMENT" is overlaid at the top, and "...so now we must divert less water." is overlaid at the bottom.

...so now we must divert less water.

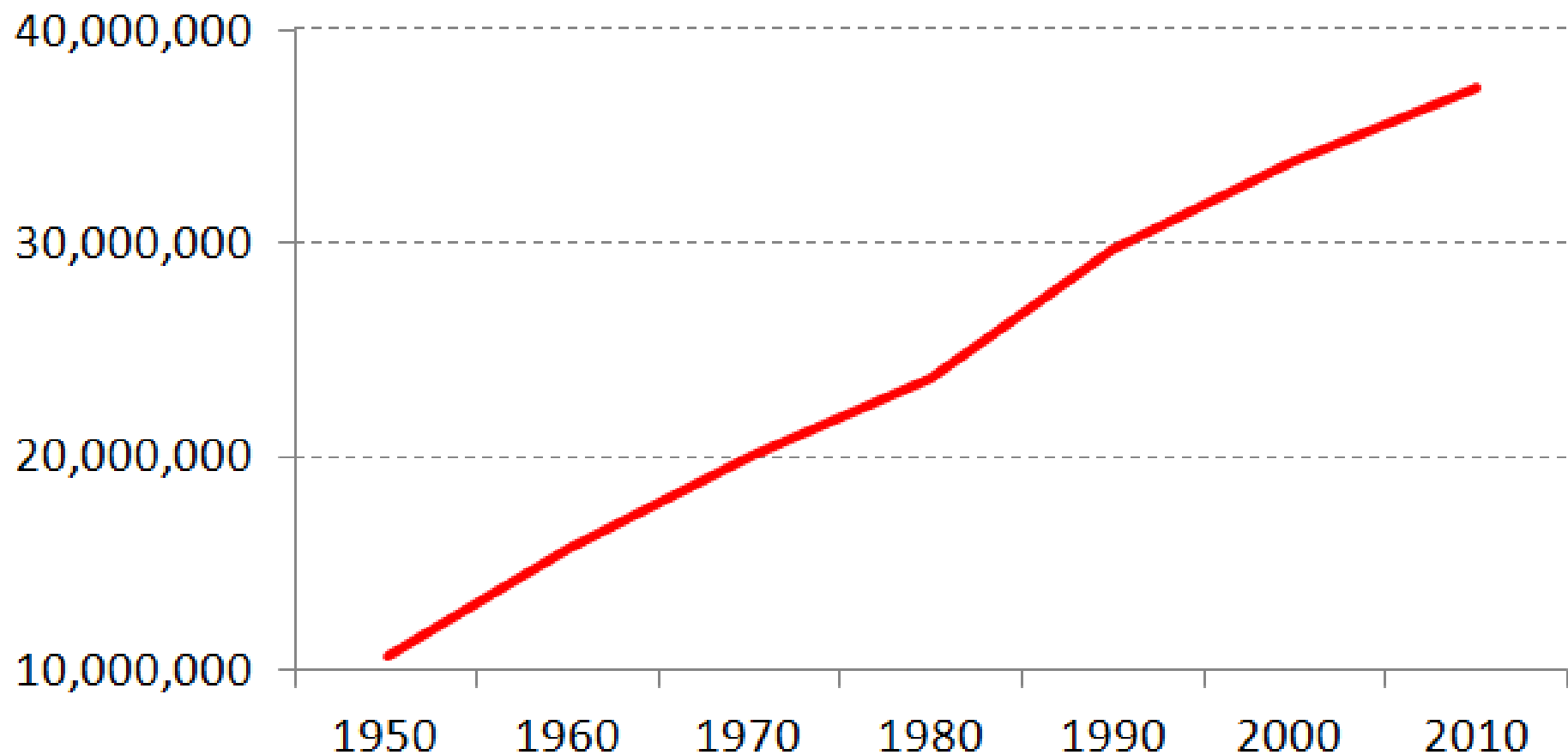
WE HAVE OVERPUMPED OUR AQUIFERS



...so now we must pump less water.

CALIFORNIA'S POPULATION HAS INCREASED

Historical California Population



NEVADA AND ARIZONA POPULATIONS HAVE ALSO INCREASED



Population Growth 2000 to 2010



>5%



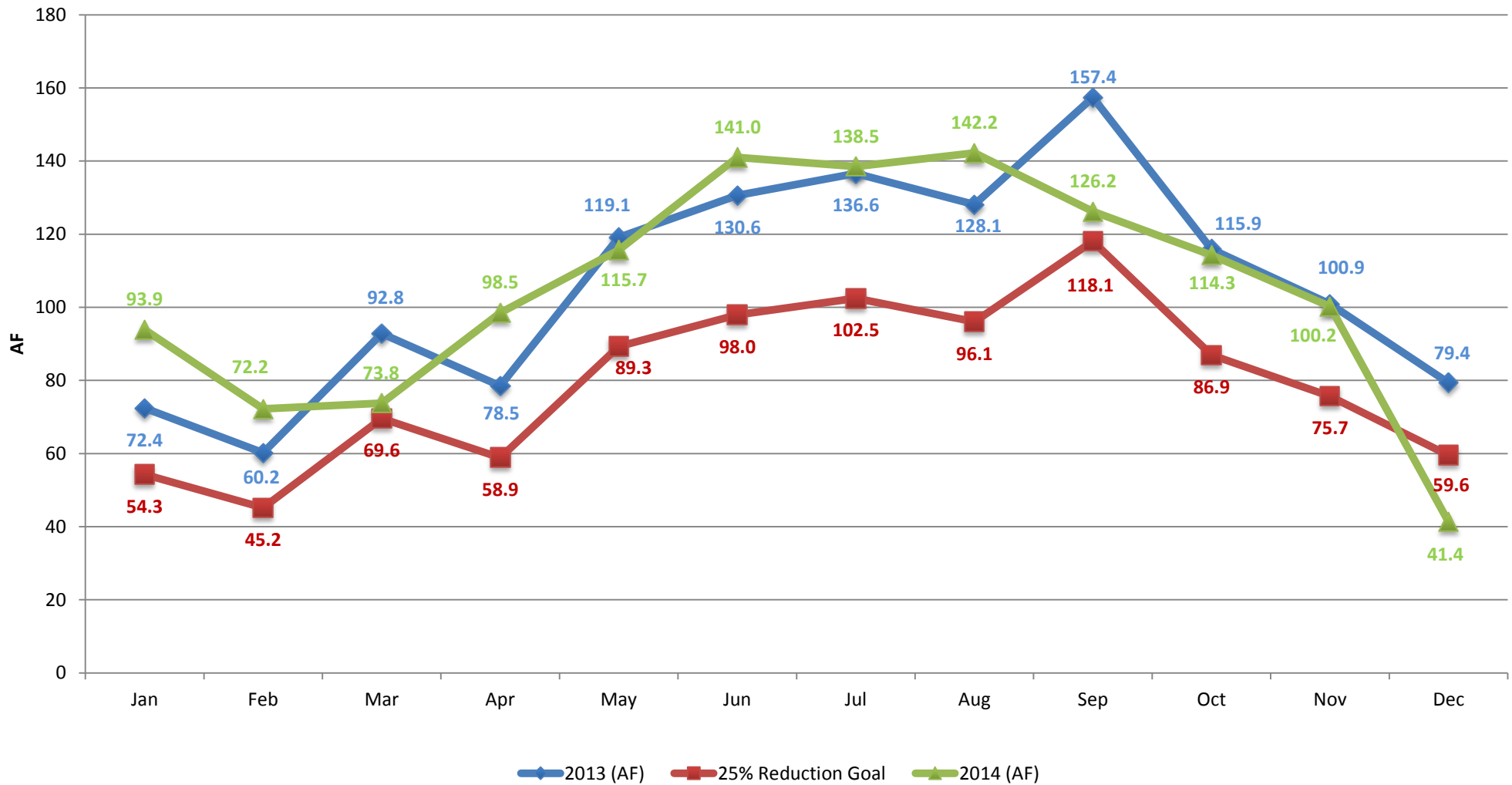
>20%

**...so more people
are competing for a
finite water supply.**

**WHAT CAN
WE DO**



DISTRICT 17 WATER REDUCTION COMPLIANCE TRACKER



WATER CONSUMPTION REDUCTION GOAL

	2013 (AF)	25% Reduction Goal	2014 (AF)	Bell Canyon GPCD
Jan	72.4	54.3	93.9	
Feb	60.2	45.2	72.2	
Mar	92.8	69.6	73.8	
Apr	78.5	58.9	98.5	
May	119.1	89.3	115.7	
Jun	130.6	98.0	141.0	
Jul	136.6	102.5	138.5	710.5
Aug	128.1	96.1	142.2	729.5
Sep	157.4	118.1	126.2	669.0
Oct	115.9	86.9	114.3	
Nov	100.9	75.7	100.2	
Dec	79.4	59.6	41.4	
	1271.9	953.9	1257.9	703.0
				AVG GPCD
				7/14-9/14
	GPCD = AF x 325851 / # days / population			
	Population = 2049 (2010 US Census)			

WHAT YOU CAN DO TO REDUCE WATER USE

With emergency drought conditions persisting throughout California, the State Water Resources Control Board adopted Emergency Regulations requiring an **immediate 25% reduction** in overall urban potable water use statewide in accordance with Governor Brown's April 1, 2015, Executive Order. (Reductions vary by Waterworks District.)

The County of Ventura Board of Supervisors adopted a resolution on May 5, 2015, declaring a **Level 2 Water Supply Shortage** for **Ventura County Waterworks District Nos. 1 (Moorpark), 17 (Bell Canyon), 19 (Somis), and Lake Sherwood Community Services District (Lake Sherwood)**. Each Waterworks District will notify customers of specific water restrictions in the near future.

The following are things you can do immediately to cut your water use:

Indoor Use

- ◆ *Use washing machines and dishwashers only when full.*
- ◆ *Install an aerator on your kitchen faucet to reduce flow.*
- ◆ *Install low-flow shower heads.*
- ◆ *Shorten your time in the shower.*
- ◆ *Turn your bathroom faucet off when brushing your teeth or shaving.*
- ◆ *Use a bucket to catch water when running it to warm up, then reuse this water for outdoor irrigation needs.*

Outdoor Use

- ◆ *Cut your outdoor irrigation in half. Reduce the number of days and the number of minutes per station on your irrigation system. (This one action alone could achieve our conservation goal.)*
- ◆ *Adjust your sprinklers to ensure only your yard is being watered, not your house, sidewalk, or street.*
- ◆ *Add a layer of mulch around trees and plants to reduce evaporation and keep the soil cool.*
- ◆ *Use a broom instead of a hose to clean driveways, sidewalks, and patios.*
- ◆ *Keep a cover on your pool/spa to prevent evaporation.*
- ◆ *Don't irrigate during rain or within 48 hours following measurable rainfall.*

CURRENT BILLING ADJUSTMENT NUMBER (BAN SCHEDULE DURING PEAK DEMAND)

25% reduction impact

BAN	Current Tier I*	Proposed Tier I*	Current Tier II*	Proposed Tier II*	Current Tier III*	Proposed Tier III*
1	0-40	0-30	41-70	30.01-52.50	>70	>52.50
2	0-60	0-45	61-105	45.01-78.75	>105	>78.75
3	0-80	0-60	81-140	60.01-105.00	>140	>105.00
4	0-100	0-75	101-175	75.01-131.25	>175	>131.25
5	0-120	0-90	121-210	90.01-157.50	>210	>157.50
6	0-140	0-105	141-245	105.01-183.75	>245	>183.75
7	0-160	0-120	161-280	120.01-210.00	>280	>210.00
13	0-280	0-210	281-490	210.01-367.50	>490	>367.50
29	0-600	0-450	601-1050	450.01-787.50	>1050	>787.50
59	0-1200	0-900	1201-2100	900.01-1575.00	>2100	>1575.00
119	0-2400	0-1800	2401-4200	1800.01-3150.00	>4200	>3150.00

*Tiers are in hundred cubic feet (HCF)/month

CURRENT AND PROPOSED RATES

<i>Tiers</i>	<i>Current</i>	<i>Proposed 6% Increase January 1, 2016</i>
Tier I	\$3.631/HCF \$1,581.66/AF	\$3.849/HCF \$1,676.62/AF
Tier II	\$5.447/HCF \$2,372.71/AF	\$5.774/HCF \$2,515.15/AF
Tier III	\$9.078/HCF \$3,954.38/AF	\$9.623/HCF \$4,191.78/AF
HCF = Hundred Cubic Feet; AF = Acre Feet		

A hearing will be held on Tuesday, August 4, 2015, at 11:00 a.m. in the Board of Supervisors' Hearing Room in the Hall of Administration at the Ventura County Government Center, 800 South Victoria Avenue, Ventura, concerning the proposed water rate increases. At the hearing, any person may be heard regarding the recommended reduction in water allocations and rate increases.

REBATE INFORMATION

Visit **bewaterwise.com**[®] For Water Efficiency Upgrade **REBATES**



Residential WaterSmart Program

Indoor Fixtures	
High-Efficiency Toilets (Tank-Type)	\$125
High-Efficiency Clothes Washers	\$110

Landscaping Equipment	
Smart Irrigation Controllers	\$105/Controller for less than one acre \$35/Station for areas larger than one acre
Soil Moisture Sensor Systems	\$80/Controller for less than one acre \$35/Station for areas larger than one acre
Rain Barrels	\$75
Rotating Nozzles for Pop-up Spray Heads	\$4/Nozzle (minimum of 15)

Turf Removal	
Removal of Irrigated Turf	\$2/square foot of irrigated turf removed and replaced with drought-tolerant plants or other approved landscape options
(\$6,000 cap per property / multiple rebates allowed)	



Commercial WaterSmart Program

Plumbing Fixtures	
High-Efficiency Toilets (Multi-Family)	\$145/Toilet - 1.06 gallons per flush or less \$100/Toilet - 1.28 gallons per flush or less
High-Efficiency Toilets (Flushometer/Tank)	\$100
Ultra-Low and Zero-Water Urinals	\$200
Plumbing Flow Control Valves	\$5/Valve (minimum of 10)

Landscaping Equipment	
Smart Irrigation Controllers/ Central Computer Irrigation Controllers	\$35/Station
Soil Moisture Sensor Systems	\$35/Irrigation controller station
Rotating Nozzles for Pop-up Spray Heads	\$4/Nozzle (minimum of 15)
Large Rotary Nozzles	\$13/Set (minimum of 8 sets)
In-Stem Flow Regulators	\$1/Regulator (minimum of 25)

Turf Removal	
Removal of Irrigated Turf	\$1/square foot of irrigated turf removed and replaced with drought-tolerant plants or other approved landscape options
(\$25,000 annual cap per property)	



Food Equipment	
Connectionless Food Steamers	\$485/Compartment
Air-Cooled Ice Machines	\$1,000

HVAC Equipment	
Cooling Tower Conductivity Controllers	\$625
Cooling Tower pH Controllers	\$1,750

Medical and Dental Equipment	
Laminar Flow Restrictors	\$10/Restrictor (minimum of 10)
Dry Vacuum Pumps	\$125/0.5HP (up to 2HP max)



For more information, visit:
bewaterwise.com

**** Rebates are subject to change. Visit bewaterwise.com for current rebate amounts and program details. ****

Lose the Lawn

Save water... Save money!

Reserve your rebate at
bewaterwise.com[®]

TURF REMOVAL PROGRAM

After
May 12, 2015

Residential

\$2/sf
Max: \$6k

Public Agency

\$2/sq ft (<3k sf)
\$1/sq ft (>3k sf)
Max: \$50k

Commercial

\$1/sq ft
Max: \$25k

CALIFORNIA LEGISLATIVE INFORMATION

AB-2100

- Prohibits an association from imposing fines or assessment against a member of a separate interest for reducing or eliminating watering of vegetation or lawns during any period for which the Gov. has declared a state of emergency, or a local government has declared a local emergency, due to drought.

AB-2104

- Provides that a provision of the governing documents or of the architectural or landscaping guidelines or policies shall be void and unenforceable if it contains conditions that have the effect of prohibiting, low water-using plants as a replacement of existing turf.

AB-349

(Proposed)

- Further narrows the ability of an HOA to restrict “low water-using plants,” an area where associations are already very limited. It would void any provision of the governing documents of HOA guidelines that prohibit the use of low water-using landscapes that require “not more than a specified amount of water”, including artificial turf.

SB-992

- Prohibits an association from imposing fines or assessment on separate interest owners for yard maintenance issues related to under-watered plants and reducing or eliminating watering of vegetation or lawns during any period for which the Gov. declared a state of emergency due to drought.



For details on the legislative bills visit http://leginfo.legislature.ca.gov/faces/billNavClient.xhtml?bill_id=201520160AB349

 **STAY TUNED...**

“Slow Your H₂O” campaign

VCWD’s microsite



<https://www.facebook.com/VCPWA>



<https://twitter.com/vcpublicworks>

FOR MORE INFORMATION



Call the County of Ventura
Water and Sanitation Department
at 805-378-3000

Or visit our website at
<http://pwa.ventura.org/water-sanitation-department/water-and-sanitation-services>

<https://www.facebook.com/VCPWA>

