



Ventura County
Watershed Protection District
Watershed Resources and Technology Division

MEMORANDUM

DATE: June 20, 2018

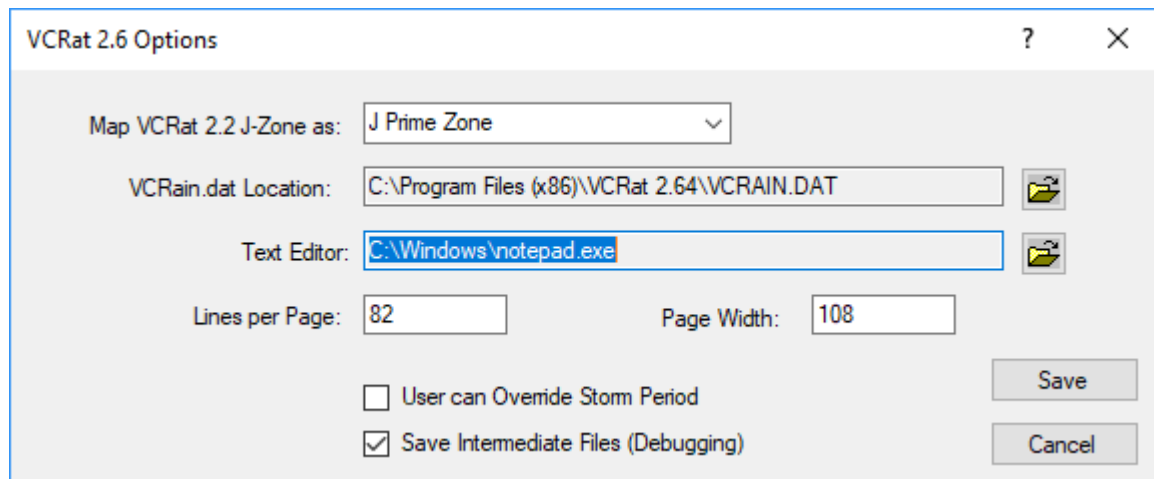
TO: Files

FROM: Mark Bandurraga, Design Hydrologist, Hydrology Section, WR&T Division

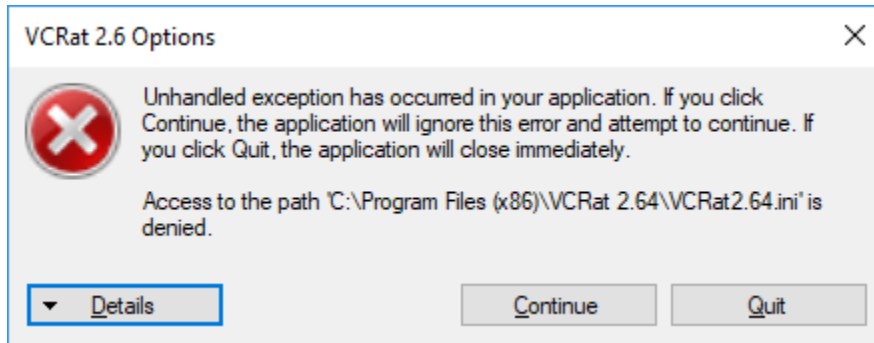
SUBJECT: Procedure to Change VCRat2.64 Options, Including Remapping Rain Zones J and J' in VCRat2.64 Using Windows 10

The default settings of the VCRat2.64 program are stored in the VCRat2.64.ini file contained in the C:\Program Files (x86)\VCRat 2.64 folder. This file was developed in Windows 7 where it can be revised by any user to allow the use of different storm periods in a model, remap J Zone rainfall, and point to an alternate VCRain.dat file location or text editor. On Windows 10 machines, however, the operating system will only let Users with Administrator privileges revise files contained in the C:\Program Files (x86)\ folders.

The Tools->Options editing window is shown below.



If you attempt to save any changes to the "Options" window on a Windows 10 machine without having Administrator privileges, you will see the following error:



The solutions to this problem depend on whether you have Administrator privileges on your computer.

If You Have Administrator Privileges

Before launching the VCRat2.64 program, right click on the VCRat2.64 icon on your desktop. Select "Run as Administrator"

The computer will ask you "Do you want to allow this app from an unknown publisher to make changes to your device?" Click "Yes".

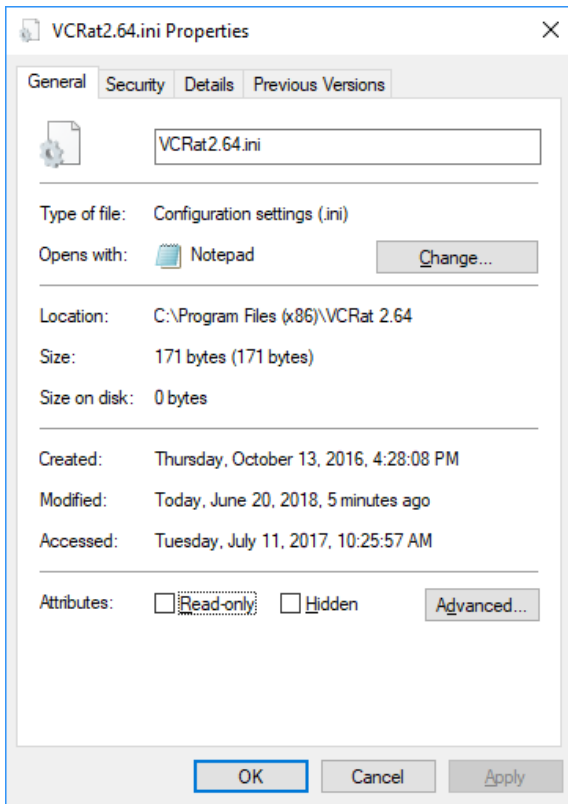
VCRat2.64 will then launch and allow you to remap the J' Zone to the J Zone in the Tools->Options editing window. However, your VCRat input files can only be accessed if they are located on your C: drive, not across network drives.

If You Do Not Have Administrator Privileges

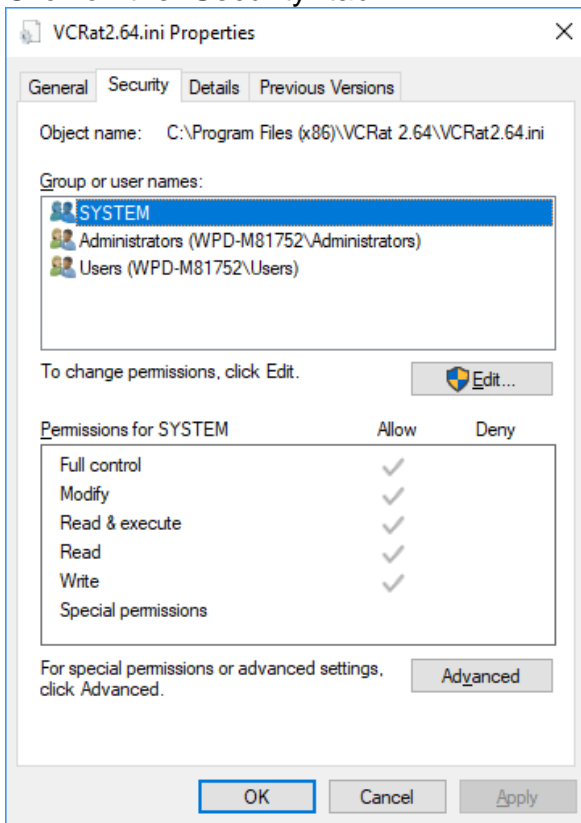
You must ask someone with Administrator Privileges to edit the VCRat2.64.ini file to allow you to have full control over this file. Through this approach, you can access VCRat input files located on your C: drive or on network drives.

The procedure is as follows:

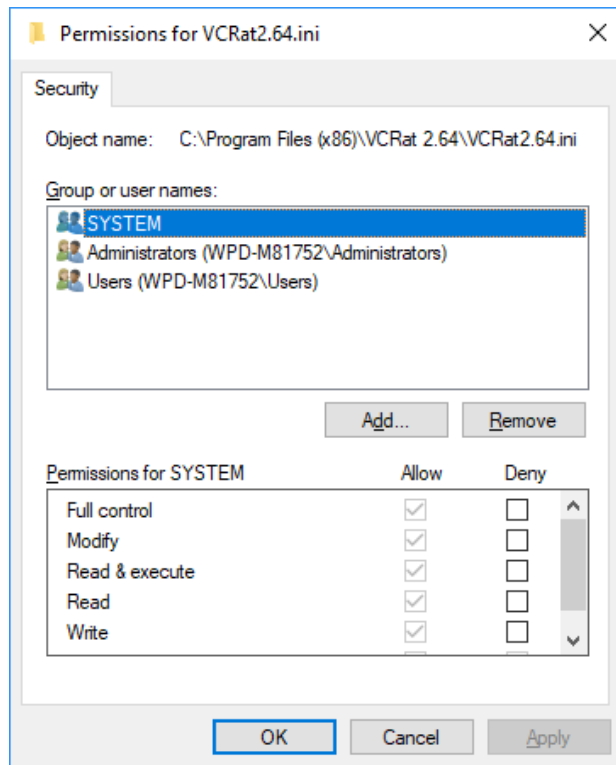
1. Navigate to the C:\Program Files (x86)\VCRat 2.64 folder.
2. Right click on the VCRat2.64.ini file.
3. Select "Properties" on the menu to display the below window.



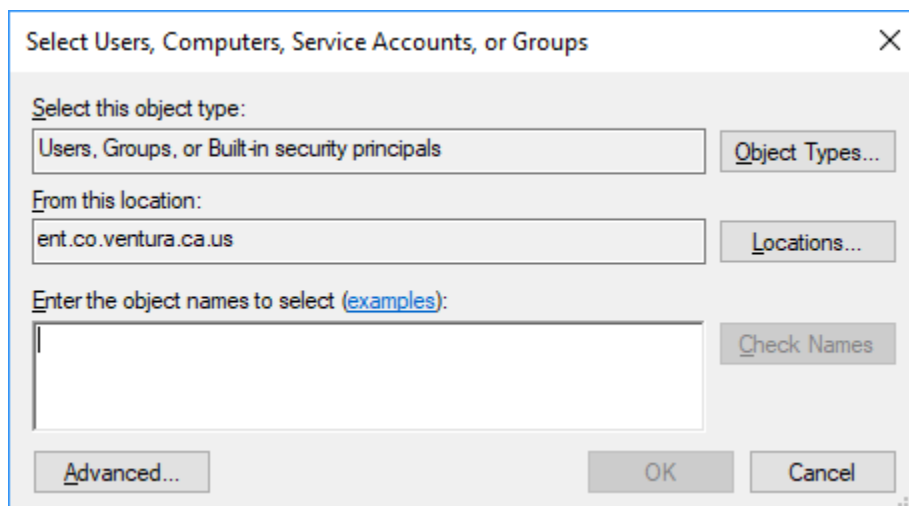
4. Click on the "Security" tab



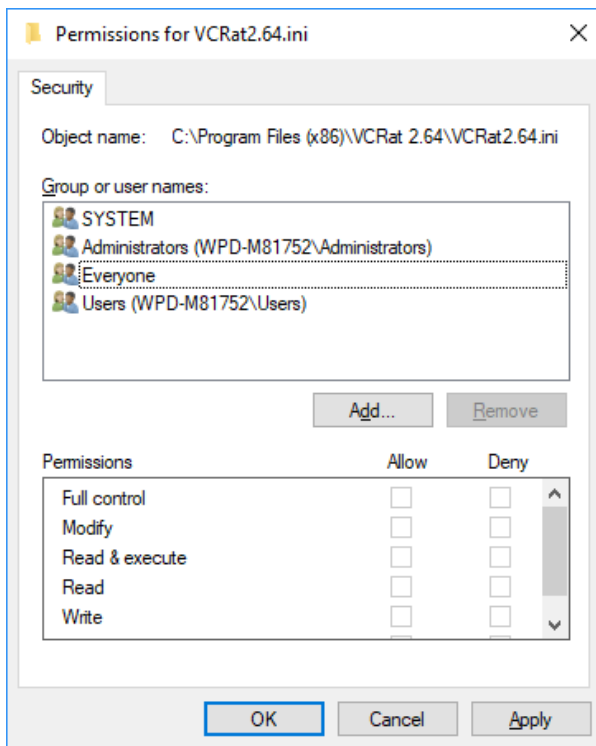
5. Click on the “Edit” button



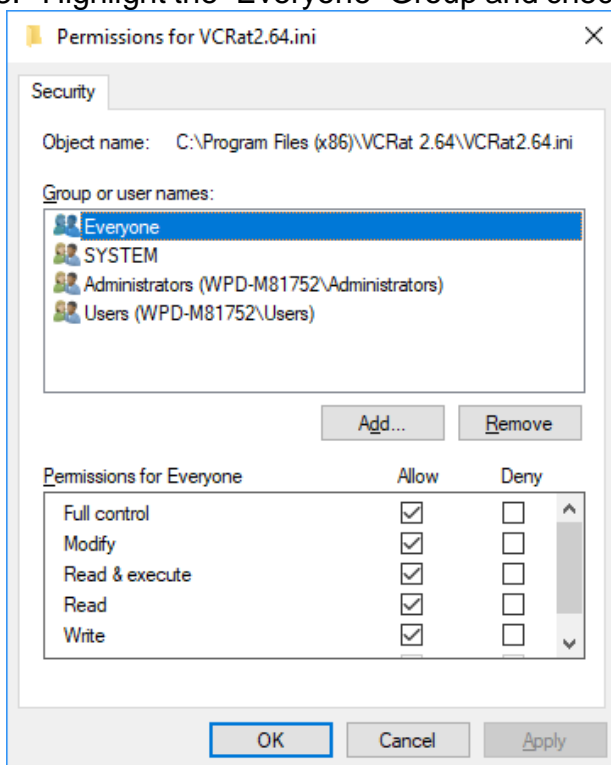
6. Click on the “Add” button.



7. Type “everyone” in the box and click on the “Check Names” button, then click “OK”.



8. Highlight the “Everyone” Group and check the “Full Control” box, then click “Apply”.



9. Then click “OK”. Click “OK” again to close the “Properties” window.

Then launch VCRat2.64 and remap the J Zone or change the other options as desired. You will have to remap the J Zone to the J’ Zone if you subsequently want to run a model using J’ data.